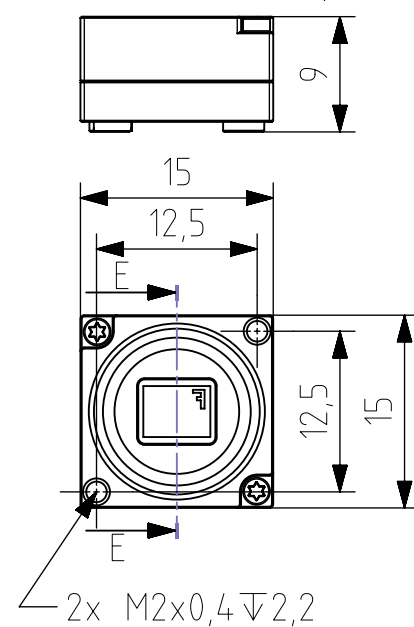
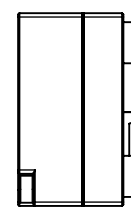
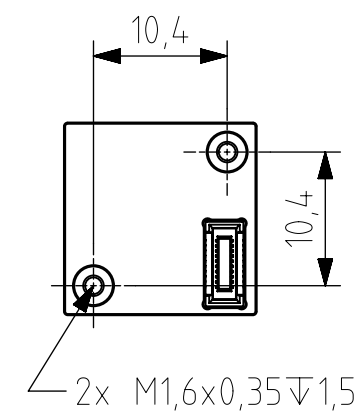


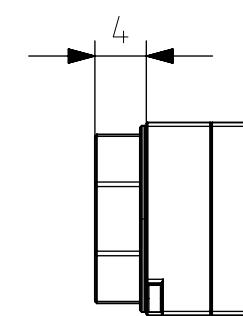
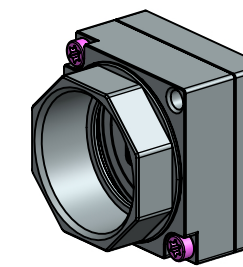
MU050xG-SY



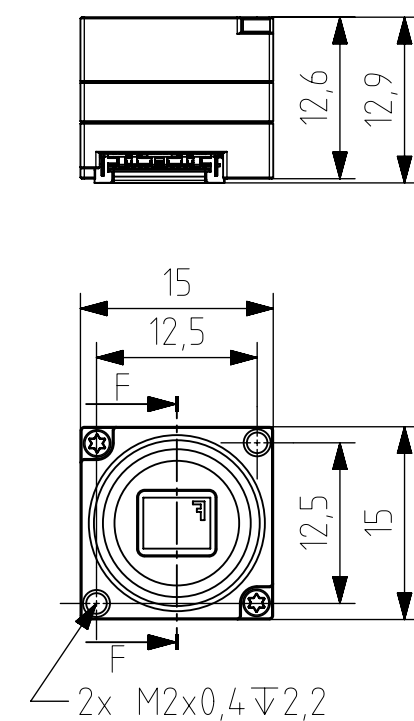
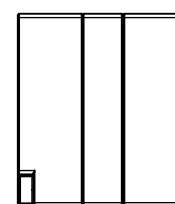
SECTION E-E



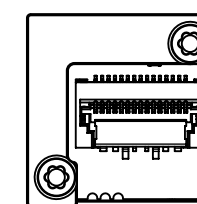
M12 medium lens adapter



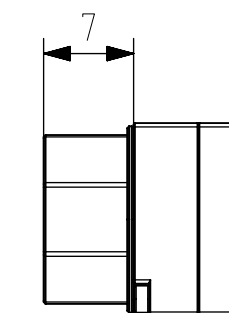
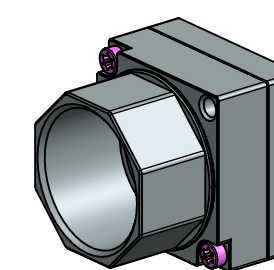
MU050xG-SY with axial and perpendicular flex line adapter



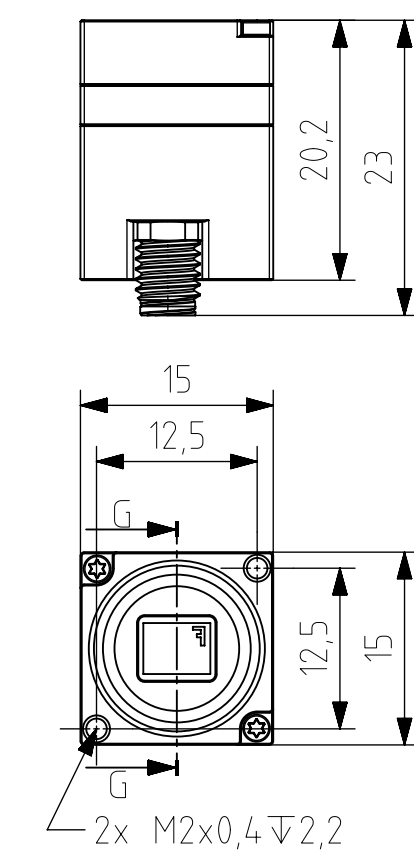
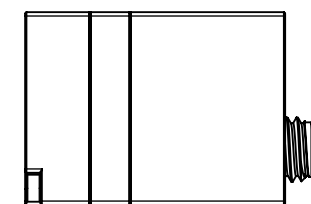
SECTION F-F



M12 large lens adapter



MU050xG-SY with Type C connector adapter



SECTION G-G

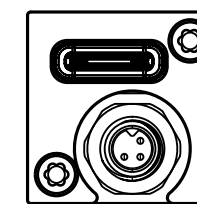
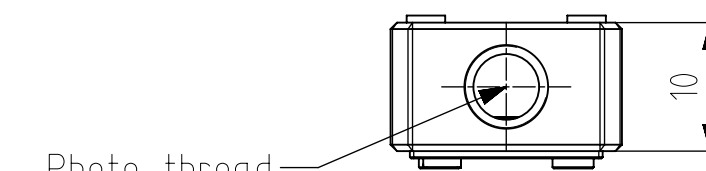
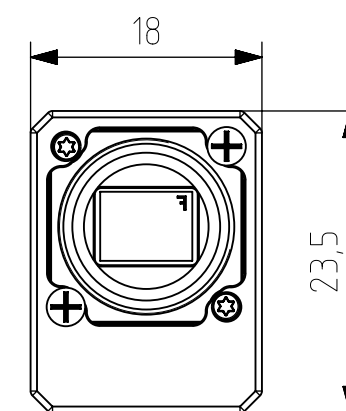
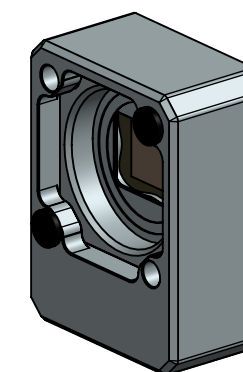
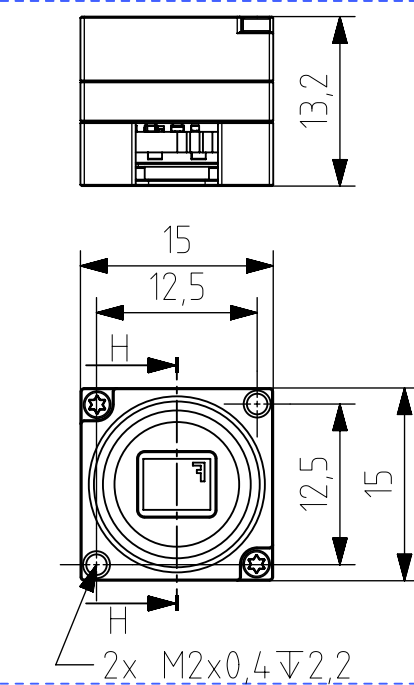
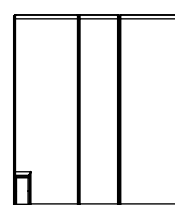


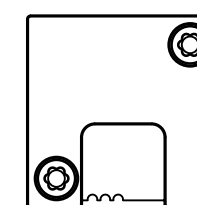
Photo thread adapter



MU050xG-SY with Type UC connector adapter



SECTION H-H



This drawing is the property of XIMEA s.r.o. No use thereof shall be made other than as a reference for proposals as submitted to XIMEA s.r.o. for jobs to be executed in conformity with such proposals unless the consent of said XIMEA s.r.o. has previously been obtained. No part of this drawing shall be copied or duplicated or its contents disclosed. The information contained in this drawing is confidential and proprietary.

Date:	Name:	PN:	Customer PN:	Surface Quality:
Designed -	R&D	MU050xR-SY	NA	Ra
Drawn 20230523	GS		Material:	Surface Finish:
Approved		PN MFG	First angle projection	optical black
QC				Weight:
MFGP				
Department: R&D	Default Tolerances:		Units: mm	Scale:
	Change	Date	Name	Format A2
			Doc Type: EU	PART REVISION
			DOCUMENT REVISION	Page:

ximea