

- **ME-LA-80MM-HB**
Lens adapter

Ximea accessories •
Technical Manual •
Version v240415 •

Introductions

About this manual

Dear customer,

Thank you for purchasing a product from XIMEA.

We hope that this manual can answer your questions, but should you have any further questions or if you wish to claim a service or warranty case, please contact your local dealer or refer to the XIMEA Support on our website:

www.ximea.com/support

The purpose of this document is to provide a description of the Ximea accessories and to describe the correct way to install related software and drivers and run it successfully. Please read this manual thoroughly before operating your new Ximea accessories for the first time. Please follow all instructions and observe the warnings.

This document is subject to change without notice.

About XIMEA

XIMEA is one of the worldwide leaders for innovative camera solutions with a 30-year history of research, development and production of digital image acquisition systems. Based in Slovakia, Germany and the US and with a global distributor network, XIMEA offers their cameras worldwide. In close collaboration with customers XIMEA has developed a broad spectrum of technologies and cutting-edge, highly competitive products.

XIMEA's camera centric technology portfolio comprises a broad spectrum of digital technologies, from data interfaces such as USB 2.0, USB 3.1 and PCIe to cooled digital cameras with CCD, CMOS and sCMOS sensors, as well as X-ray cameras.

XIMEA has three divisions – generic machine vision and integrated vision systems, scientific imaging and OEM/custom.

XIMEA cameras find use in many industrial applications, such as motion control, robotics, or quality control in manufacturing. The broad spectrum of cameras also includes thermally stabilized X-ray cameras, and specialty cameras for medical applications, research, surveillance and defense.

Contact XIMEA

XIMEA is a worldwide operating company

Headquarters, Sales worldwide

XIMEA GmbH
Am Mittelhafen 16
48155 Münster
Germany

Tel: +49 (251) 202 408-0
Fax: +49 (251) 202 408-99

Web
General inquiries
Sales
Support

www.ximea.com
info@ximea.com
sales@ximea.com
XIMEA Support

Sales America

XIMEA Corp.
12600 W Colfax Ave., Suite A-130
Lakewood, CO 80215
USA

Tel: +1 (303) 389-9838
Fax: +1 (303) 202-6350

R&D, Production

XIMEA s.r.o.
Lesná 52
900 33 Marianka
Slovakia

Tel: +421 (2) 205 104 26
Fax: +421 (2) 205 104 27

Contents

About this manual	2
About XIMEA	2
Contact XIMEA	2
1 General description	4
2 Dimensional drawings	5
3 Connectors	6
3.1 Location of connectors	6
3.2 Power connector	6
4 Usages	7
4.1 Mounting points	7
5 Additional information	8
5.1 Screws	8
List of figures	9
List of tables	10

1 General description

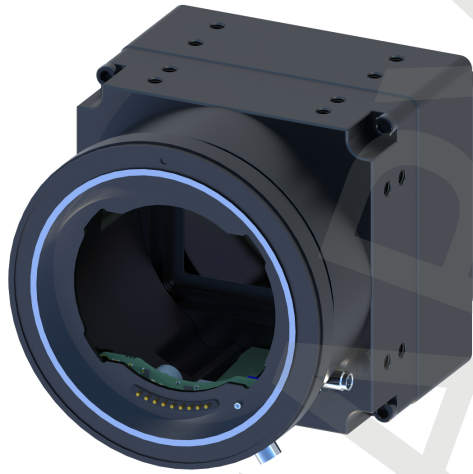


Figure 1: isometric view of ME-LA-80MM-HB

- Hasselblad Lens Adapter for 80×80 mm front camera element
- Full lens control support
- The adapter is mounted to the camera using 4 M4x16 screws

2 Dimensional drawings

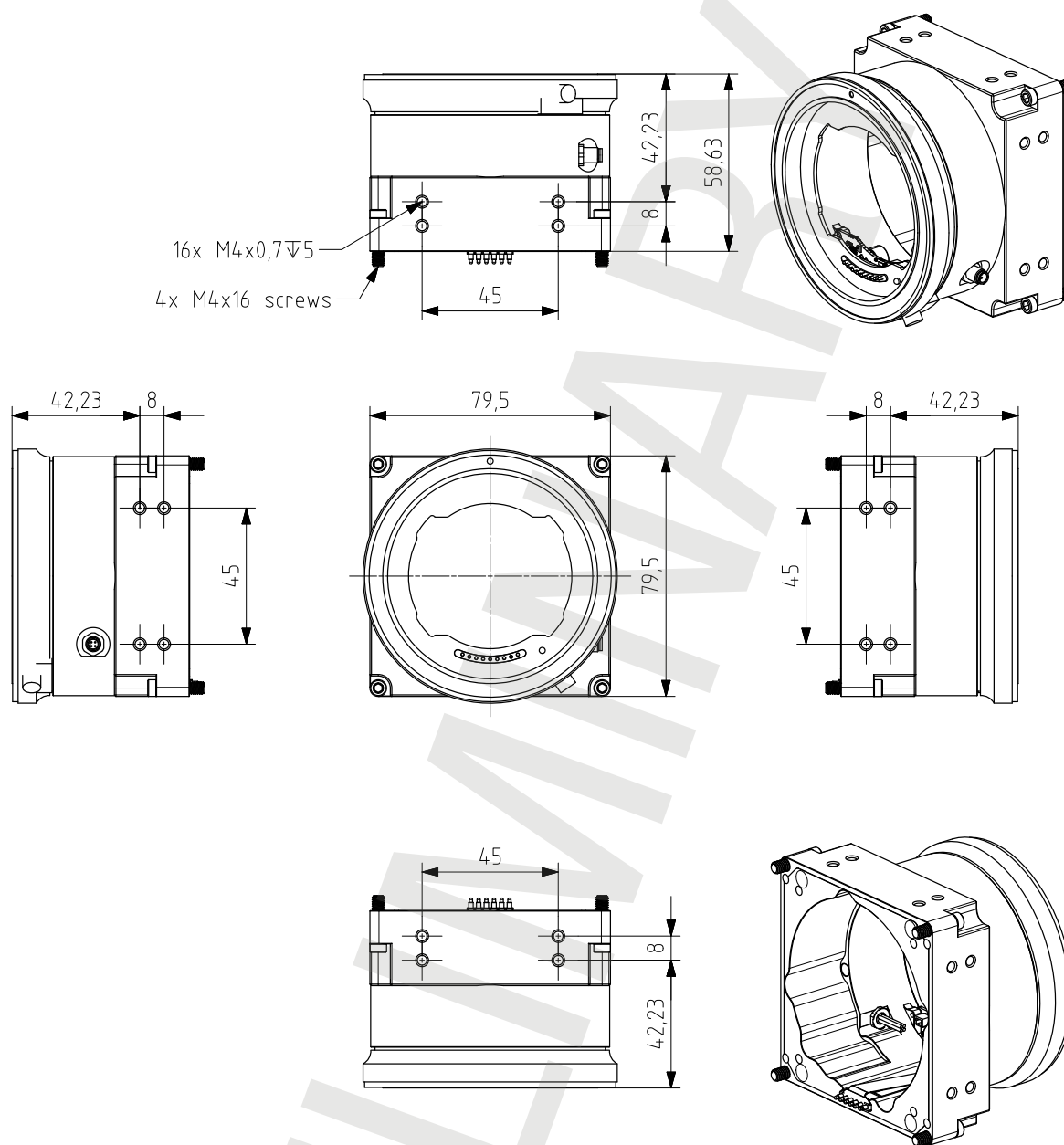


Figure 2: dimensional drawing of ME-LA-80MM-HB

Width [W]	Height [H]	Depth [D]	Mass [M]	Material
79.5 mm	79.5 mm	58.6 mm	TBD	Machined aluminum alloy ¹

¹anodized to black color

Table 1: mechanical parameters of ME-LA-80MM-HB

3 Connectors

3.1 Location of connectors

Item	Value
Connector	Binder PN: 09 3111 81 04
Mating Connectors	Binder PN: 79 3108 52 04

Table 2: test

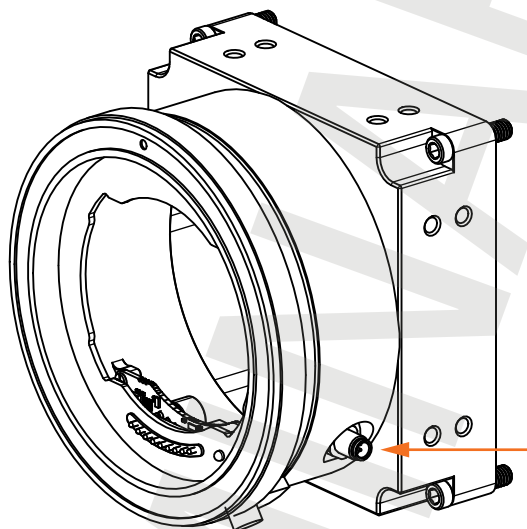


Figure 3: ME-LA-80MM-HBconnector location

3.2 Power connector

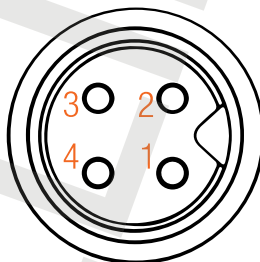


Figure 4: ME-LA-80MM-HBME-LA-80MM-HB pinning

pin	name	signal	Technical description
1	GND	Power ground	-
2	AUX PWR	Power Supply input	12 to 24 V
3	AUX PWR	Power Supply input	12 to 24 V
4	GND	Power ground	-

Table 3: pin assigment

4 Usages

4.1 Mounting points

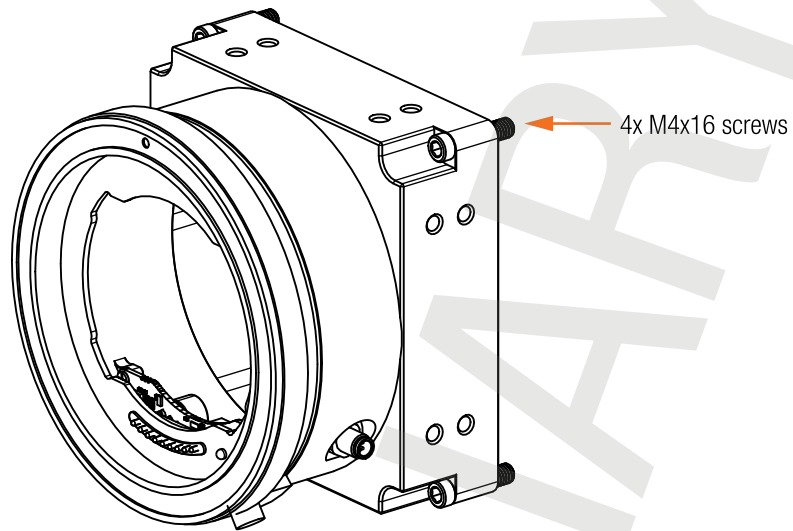


Figure 5: mounting points

5 Additional information

5.1 Screws

All mounting screws are customized M4 screws

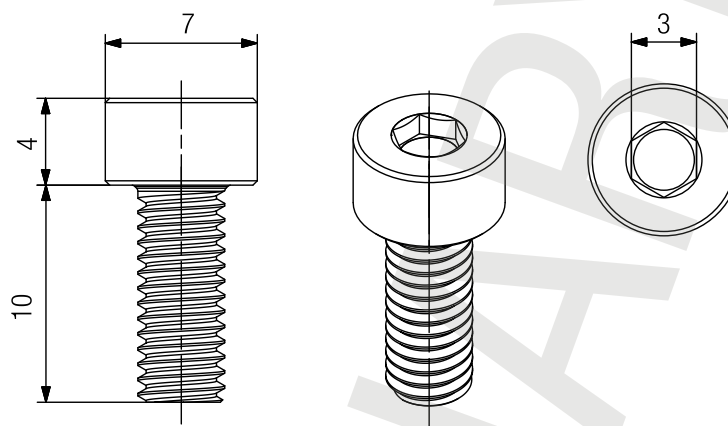


Figure 6: mounting screws

Material	Stainless steel
Surface	Polished
Thread	M4 Full thread
Driver	IMBUS 3.0
Avail.	Lengths 6 – 40 mm

Table 4: custom screws, technical details

For more information about ME-LA-80MM-HB please contact: sales@ximea.com.

List of Figures

1	isometric view of ME-LA-80MM-HB	4
2	dimensional drawing of ME-LA-80MM-HB	5
3	ME-LA-80MM-HBconnector location	6
4	ME-LA-80MM-HBME-LA-80MM-HB pinning	6
5	mounting points	7
6	mounting screws	8

List of Tables

1	mechanical parameters of ME-LA-80MM-HB.....	5
2	test	6
3	pin assignment.....	6
4	custom screws, technical details	8

PRELIMINARY

XIMEA GmbH

Am Mittelhafen 16 • 48155 Münster • Germany • www.ximea.com

© Copyright, XIMEA GmbH, All rights reserved