



- ME-LA-80MM-M72-L  
Lens adapter

# Introductions

## About this manual

Dear customer,

Thank you for purchasing a product from XIMEA.

We hope that this manual can answer your questions, but should you have any further queries or if you wish to claim a service or warranty case, please contact your local dealer or refer to XIMEA Support on our website: [www.ximea.com/support](http://www.ximea.com/support)

The purpose of this document is to provide a description of XIMEA Accessories and to describe the correct way to install related software, drivers and run it successfully. Please read this manual thoroughly before operating your new XIMEA Accessories for the first time. Please follow all instructions and observe the warnings.

This document is subject to change without notice.

## About XIMEA

XIMEA is one of the worldwide leaders for innovative camera solutions with a 30-year history of research, development and production of digital image acquisition systems. Based in Slovakia, Germany and the US, with a global distributor network, XIMEA offers their cameras worldwide. In close collaboration with customers XIMEA has developed a broad spectrum of technologies and cutting-edge, highly competitive products.

XIMEA's camera centric technology portfolio comprises a broad spectrum of digital technologies, from data interfaces such as USB 2.0, USB 3.1 and PCIe to cooled digital cameras with CCD, CMOS and sCMOS sensors, as well as X-ray cameras.

XIMEA has three divisions – generic machine vision and integrated vision systems, scientific imaging and OEM/custom.

Our broad portfolio of cameras includes thermally stabilized astronomy and x-ray cameras, as well as specialty cameras for medical applications, research, surveillance and defense.

## Contact XIMEA

XIMEA is a worldwide operating company

Headquarters, Sales worldwide

XIMEA GmbH  
Am Mittelhafen 16  
48155 Münster  
Germany

Tel: +49 (251) 202 408-0  
Fax: +49 (251) 202 408-99

Web [www.ximea.com](http://www.ximea.com)  
General inquiries [info@ximea.com](mailto:info@ximea.com)  
Sales [sales@ximea.com](mailto:sales@ximea.com)  
Support [XIMEA Support](#)

Sales America

XIMEA Corp.  
12600 W Colfax Ave., Suite A-130  
Lakewood, CO 80215  
USA

Tel: +1 (303) 389-9838  
Fax: +1 (303) 202-6350

R&D, Production

XIMEA s.r.o.  
Lesná 52  
900 33 Marianka  
Slovakia

Tel: +421 (2) 205 104 26  
Fax: +421 (2) 205 104 27

# Contents

About this manual .....	2
About XIMEA .....	2
Contact XIMEA .....	2
<b>1 General description .....</b>	<b>4</b>
<b>2 Dimensional drawings .....</b>	<b>5</b>
<b>3 Usages .....</b>	<b>6</b>
3.1 Mounting points .....	6
<b>4 Additional information .....</b>	<b>7</b>
4.1 Optical path .....	7
4.2 Screws .....	7
List of figures .....	8
List of tables .....	9

## 1 General description

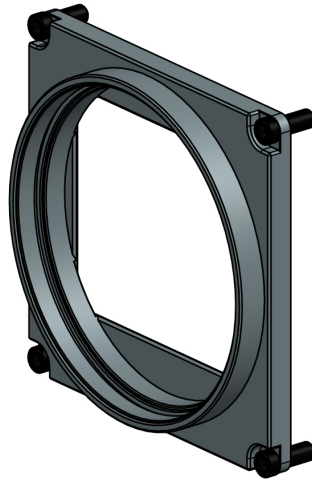


Figure 1: Isometric view of Lens Adapter ME-LA-80MM-M72-L

The ME-LA-80MM-M72-L is a precision-machined M72 lens adapter designed for cameras with an  $80 \times 80$  mm front element. The adapter is created from machined aluminum alloy and surface-treated with black anodization. It can be mounted to the camera housing using four  $M4 \times 10$  mm screws, ensuring secure and stable attachment.

Suitable for **xiX-XL** camera series.

## 2 Dimensional drawings

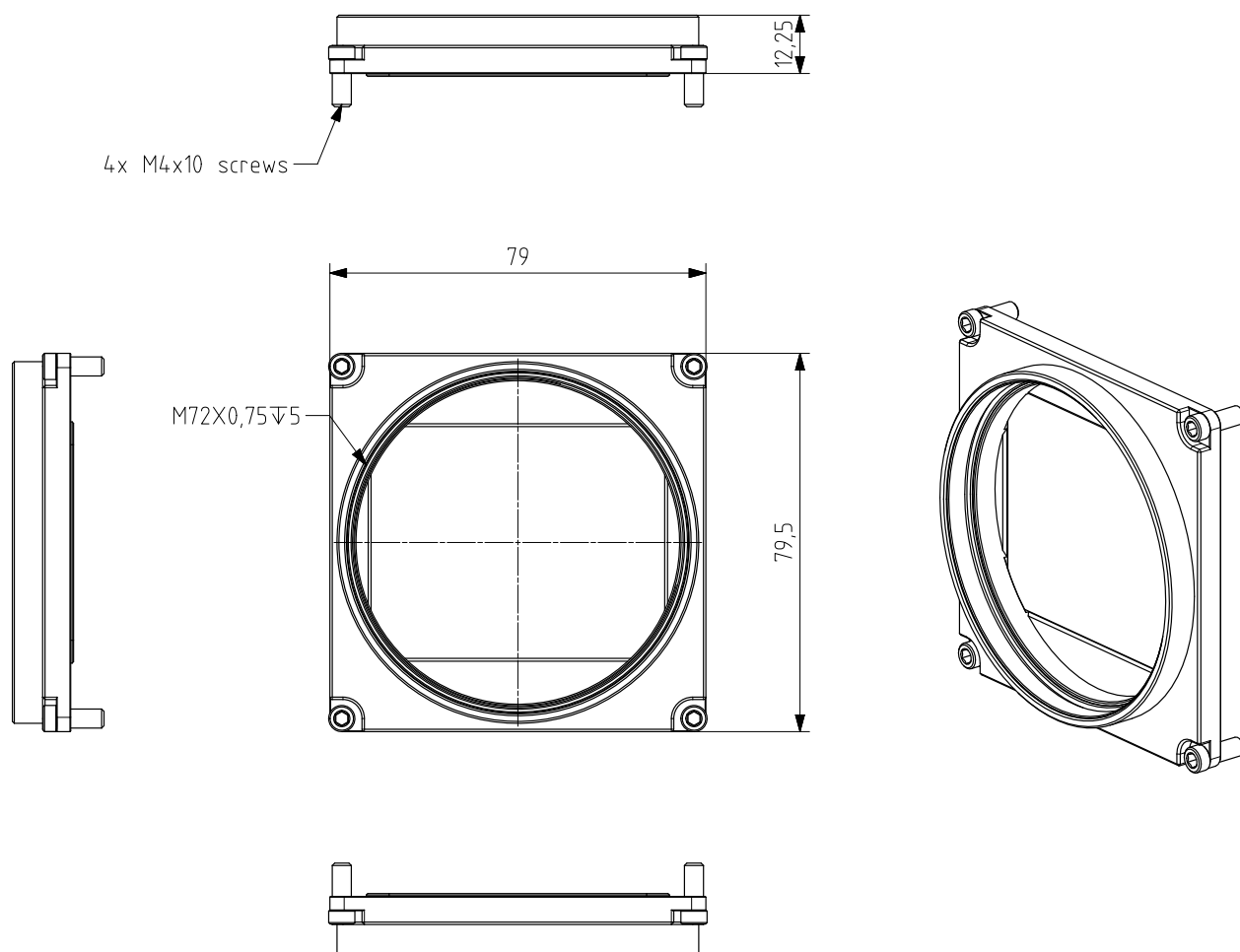


Figure 2: Dimensional drawing of ME-LA-80MM-M72-L

Width [ W ]	Height [ H ]	Depth [ D ]	Mass [ M ]	Material
80.0 mm	80.0 mm	12.25 mm	50 g <sup>1</sup>	Machined aluminum alloy <sup>2</sup>

<sup>1</sup>with screws together 54 g ± 0.3 g

<sup>2</sup>anodized to black color

Table 1: Mechanical parameters of ME-LA-80MM-M72-L

## 3 Usages

### 3.1 Mounting points

The adapter is mounted to the camera using 4 M4x10 screws.

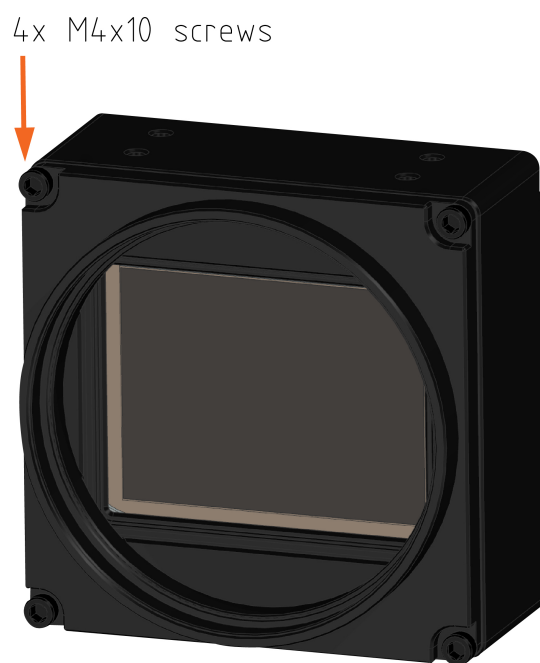


Figure 3: Mounting points

## 4 Additional information

### 4.1 Optical path

Flange focal distance is 20.25 mm geometrical (19.83 mm optical).

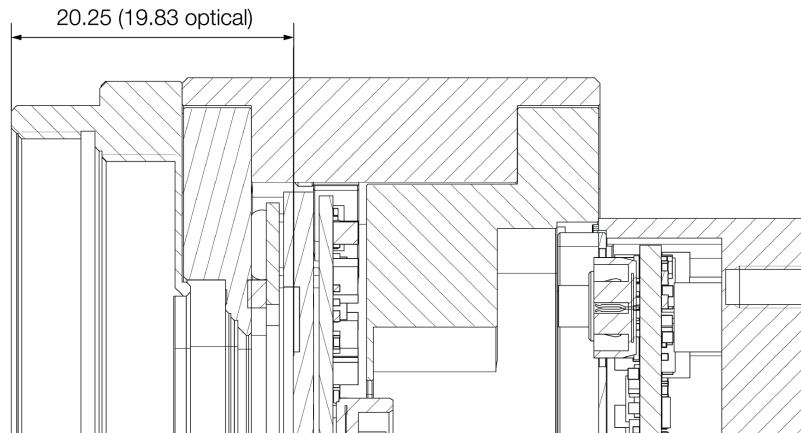


Figure 4: ME-LA-80MM-M72-L optical path

### 4.2 Screws

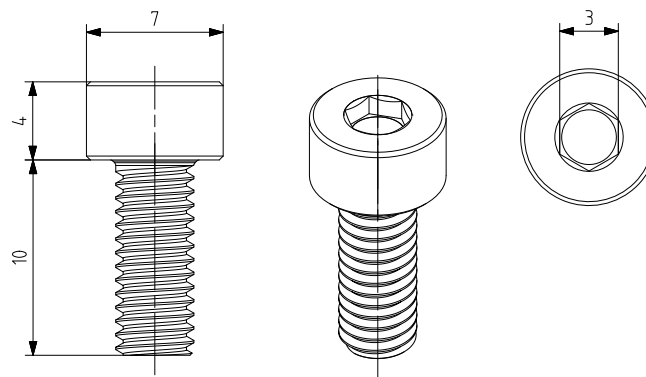


Figure 5: Mounting screws

Material	Stainless steel
Surface	Polished
Thread	M4 Full thread
Driver	INBUS 3.0
Avail. Lengths	6 – 40 mm

Table 2: Technical details of M4 screw

For more information about ME-LA-80MM-M72-L please contact: [sales@ximea.com](mailto:sales@ximea.com).

List of Figures

1	Isometric view of Lens Adapter ME-LA-80MM-M72-L .....	4
2	Dimensional drawing of ME-LA-80MM-M72-L .....	5
3	Mounting points .....	6
4	ME-LA-80MM-M72-L optical path .....	7
5	Mounting screws .....	7



List of Tables

1	Mechanical parameters of ME-LA-80MM-M72-L.....	5
2	Technical details of M4 screw.....	7

