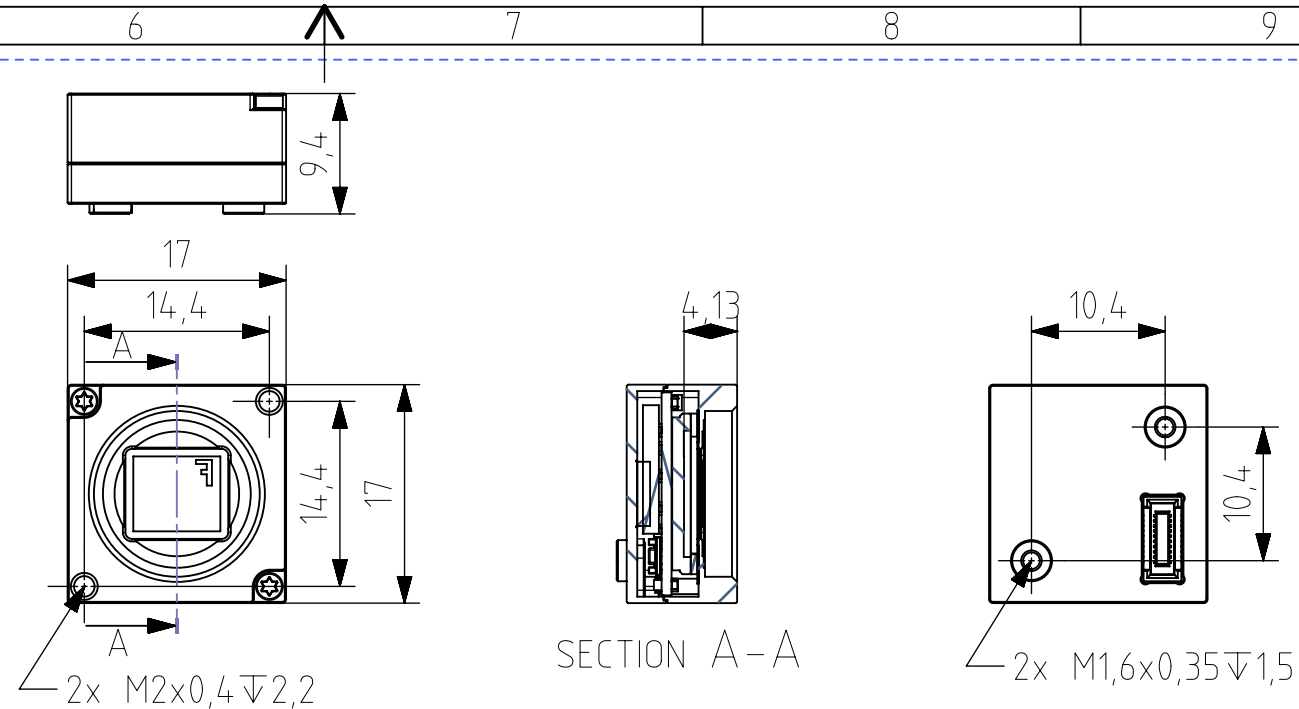
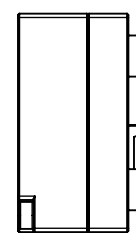
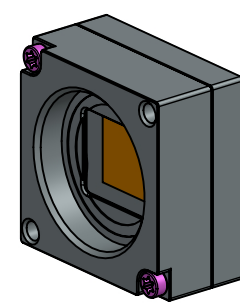
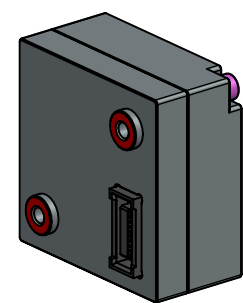
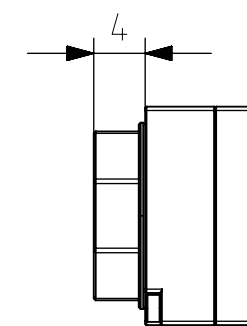
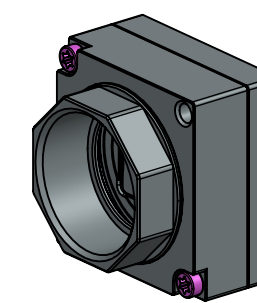


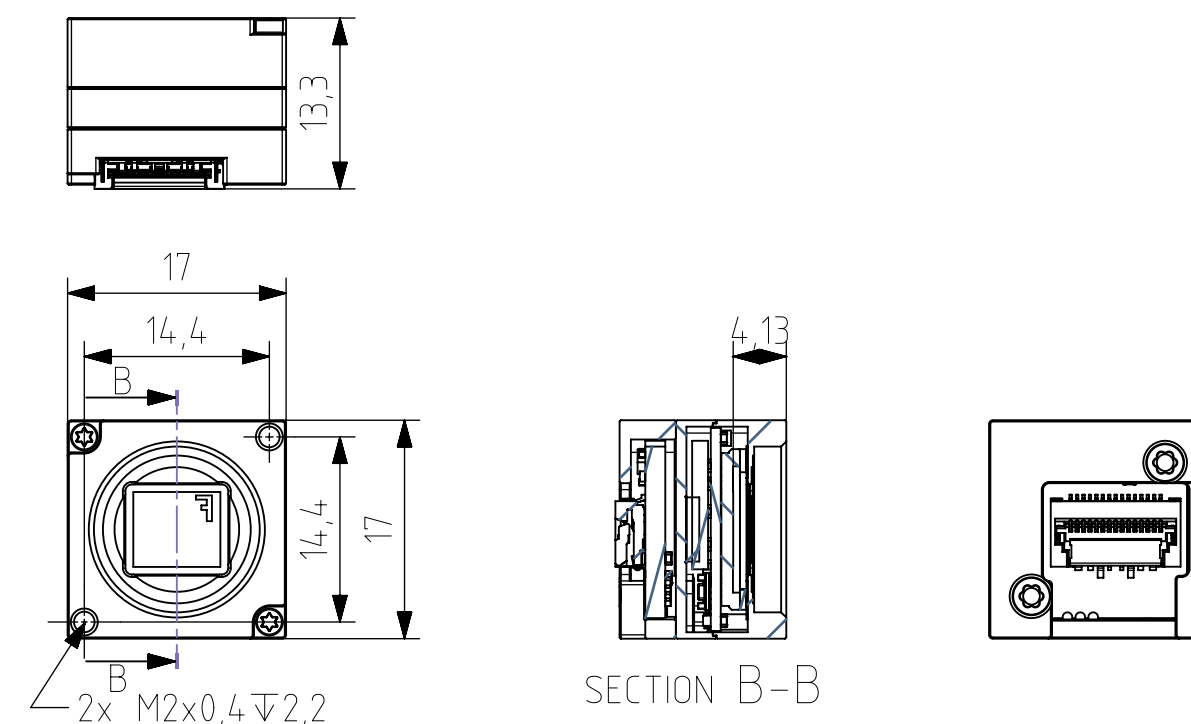
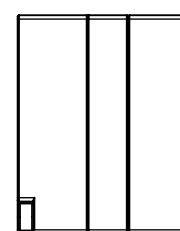
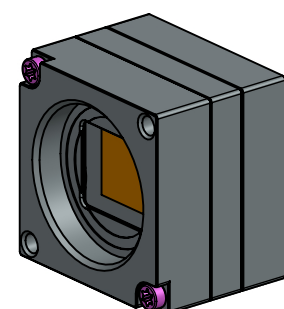
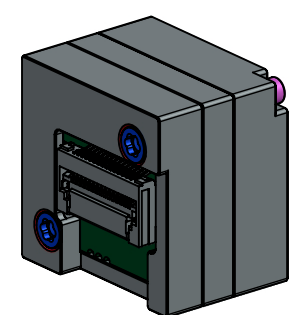
MU051xG-SY



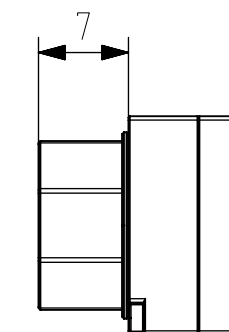
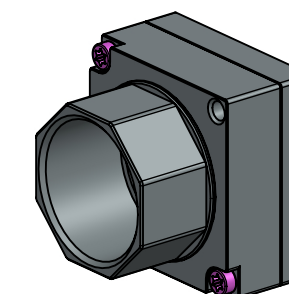
M12 medium lens adapter



MU051xG-SY with axial and perpendicular flex line adapter



M12 large lens adapter



MU051xG-SY with Type C connector adapter

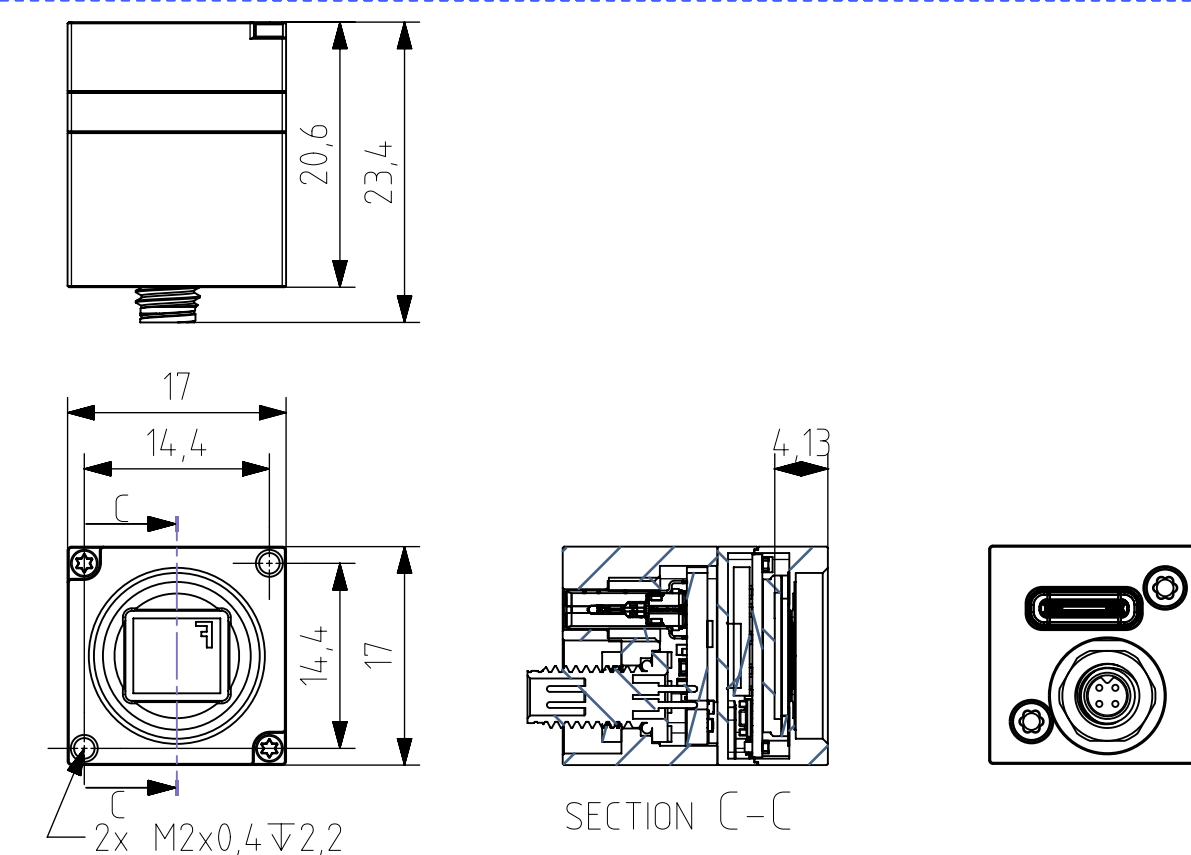
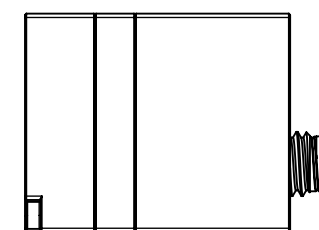
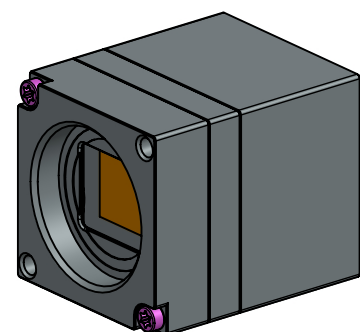
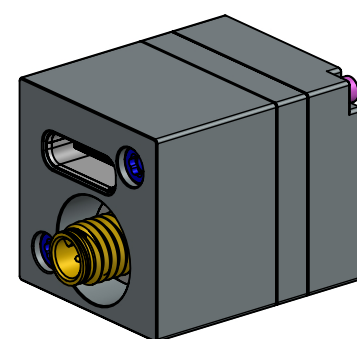
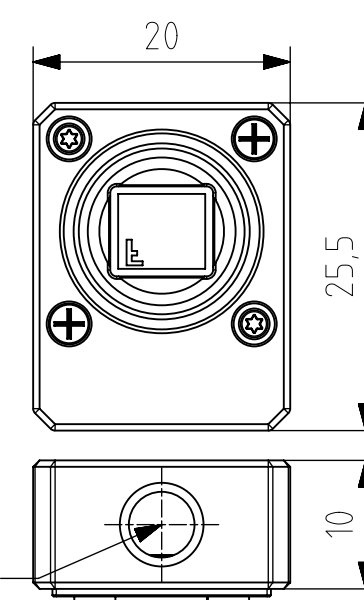
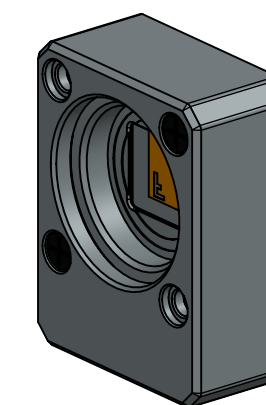
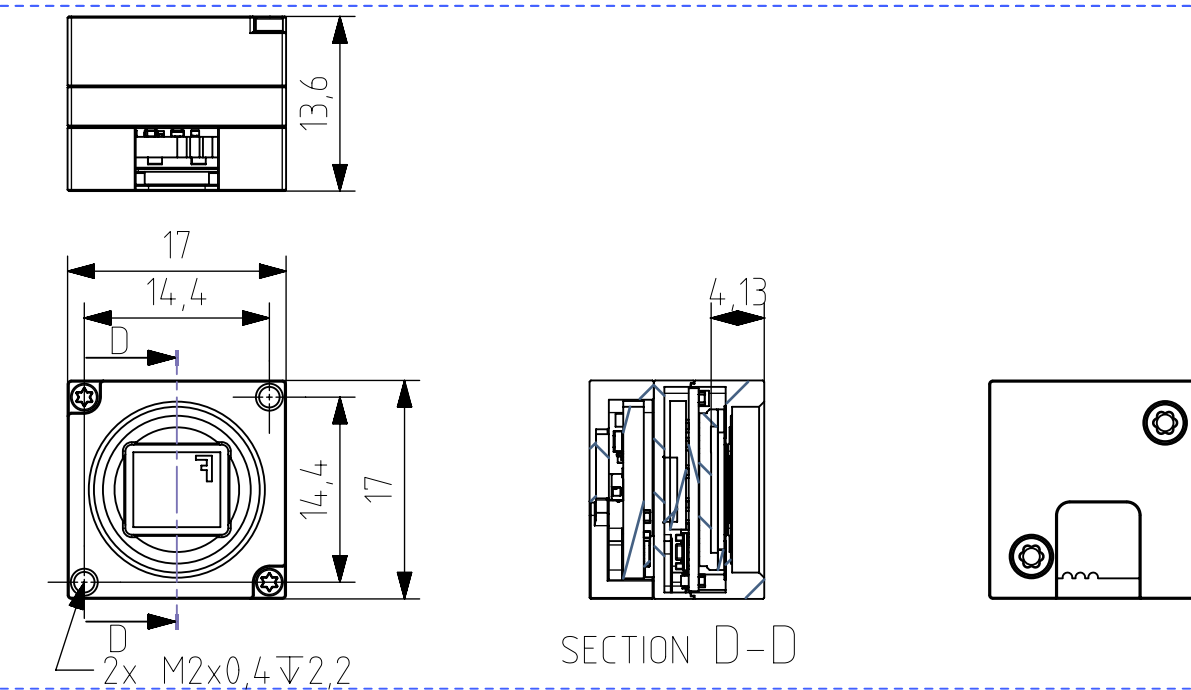
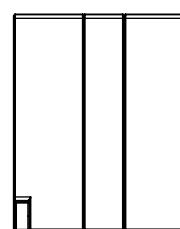
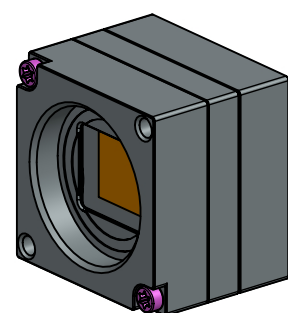
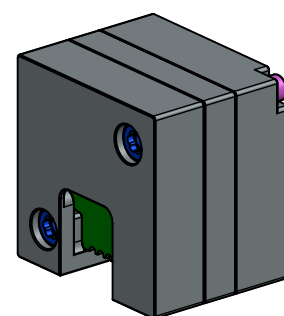


Photo thread adapter



MU051xG-SY with Type UC connector adapter



This drawing is the property of XIMEA s.r.o. No use thereof shall be made other than as a reference for proposals as submitted to XIMEA s.r.o. for jobs to be executed in conformity with such proposals unless the consent of said XIMEA s.r.o. has previously been obtained. No part of this drawing shall be copied or duplicated or its contents disclosed. The information contained in this drawing is confidential and proprietary.

Date:	Name:	PN:	Customer PN:	Surface Quality:
Designed	-	R&D	NA	Ra
Drawn	20231012	GS	MU051xG-SY	Material:
Approved			PN MFG	Surface Finish:
QC				optical black
MFGP				Weight:
Department:	R&D	Default Tolerances:	Units:	Scale:
			mm	Format
			Doc Type:	A2
			EU	Page: