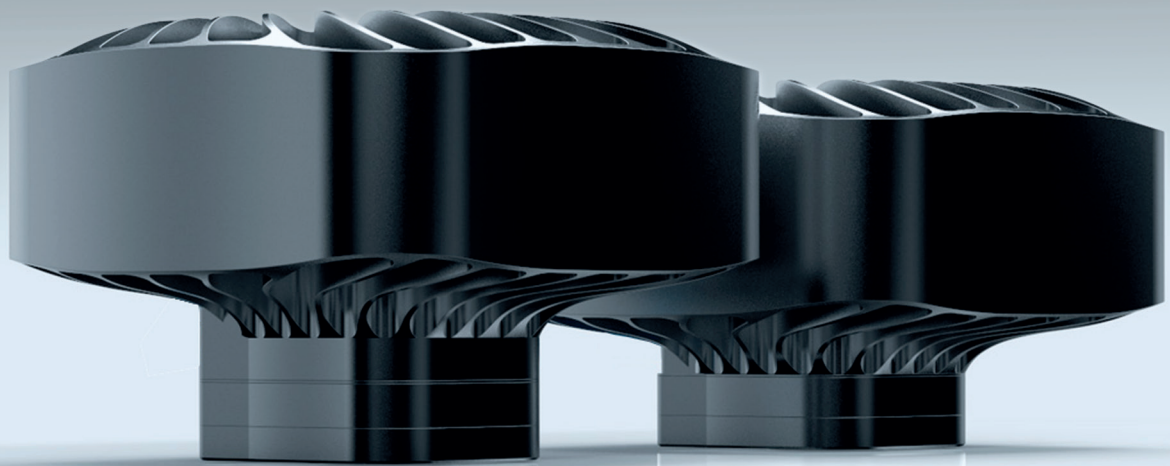


Cooled USB3 CCD camera series

ximea

outstanding performance • fastest multi-tap readout



xiD[cooled]

USB3 peltier-cooled cameras

xiD^[cooled] - series camera specification

xiD^[cooled] is an USB3.0 camera family using the most recent CCD sensors for challenging scientific purposes with outstanding features:

- TEC peltier cooled housing. Allows significantly diminished dark current values (DSNU)
- highest level of sensitivity
- clear 14 bits/pixel images in all modes
- ultra-low read-out noise, even in low-light conditions with long exposure times
- high resolution without cut-backs on the acquisition speed
- partial readout and several binning modes with enhanced sensitivity and highest frame rates

Sensors and models:

[Revision 1.1, preliminary]

Model ¹⁾	Sensor	Resolution	Pixel size [μm]	ADC [bits]	DR [dB] ²⁾	FWC [e-]	Sensor size [mm]	Diagonal [mm]	FPS ³⁾
MD028xC-SY	SONY ICX674	1934 x 1456, 2.8 MP	4.54	8,10,12,14	71.1	20000	8.8 x 6.6	11	56.9
MD061xC-SY	SONY ICX694	2754 x 2204, 6.1 MP	4.54	8,10,12,14	71.8	19500	12.5 x 10.0	16	28.4
MD091xC-SY	SONY ICX814	3384 x 2708, 9.1 MP	3.69	8,10,12,14	68.4	12000	12.5 x 10.0	16	19.5
MD120xC-SY	SONY ICX834	4242 x 2830, 12.0 MP	3.1	8,10,12,14	63.1	10000	13.2 x 8.8	15.8	15.3

Note 1: various models available: x = C color, M mono

Note 2: 26 MHz readout frequency

Note 3: 52 MHz, 4 taps, RAW14 bits; + 20% in overclocked mode, 12bit packed

- Sony "EXview HAD CCD II" pixel technology with improved light efficiency for the near-infrared spectrum
- XIMEA's proprietary CLEANPATH - readout and sensor driving circuitry, enabling scientific imaging with extremely low readout noise and high fidelity in color reproduction.
- Global shutter CCD with interline transfer - 1, 2 or 4 tap readout with 14 bit ADC
- No selected grades - all cameras are scientific grade

Compatibility:

Standard **Windows, Linux & MacOS** operation systems • USB3.0 • GenICam / GenTL • Single SDK/API for all XIMEA camera models. Compatible with the widest range of vision libraries. Please check website for up-to-date list!



What is xiLab?

Anything displayed with the reference „xiLab“ or in our xiLab space in our booth refers therefore to technologies and prototypes that are developed and functional, but where XIMEA does not commit on release, time lines or final appearance.

We are keen to learn the markets reaction to items displayed or exposed under this label.

Contact:

Please visit **ximea.com** for complete product information.

E-mail our sales team at **sales@ximea.com** for your price and further information.



XIMEA GmbH, Germany

Hansestraße 81
48165 Münster
Germany
info@ximea.com
Tel: +49 2501 964 555-0
Fax: +49 2501 964 555-99

XIMEA s.r.o., Slovakia

Lesna 52
900 33 Marianka
Slovakia
info@ximea.com
Tel: +421 (2) 205 104 26
Fax: +421 (2) 205 104 27

XIMEA Corp., USA

2102 Beech Court
Golden, CO 80401
USA
info@ximea.com
Tel: +1 (303) 389-9838
Fax: +1 (303) 202-6350