



ximea



## Just BIG

XIMEA presents the latest camera in its PCI Express product line with the groundbreaking GSENSE6060 sensor (frontside or backside) from Gpixel. Scientific applications will benefit from the combination of high speed CMOS characteristics with CCD like performance in full well and noise. Contact us and see how we can revolutionize your imaging of the very large and the very small.

### Key features

#### Large format sCMOS

6144 (H) x 6144 (V)

10 $\mu$ m pixels

#### CCD-like performance

High QE from backside illuminated parts, >95% QE

High dynamic range, 92dB

Full well 120ke<sup>-</sup>, Readout noise 4e<sup>-</sup>

Low dark current, cooling down to -10°C

#### CMOS speed

45 fps @ 12 bit in full resolution

PCIe X4 Gen3 data interface, 32Gb/s

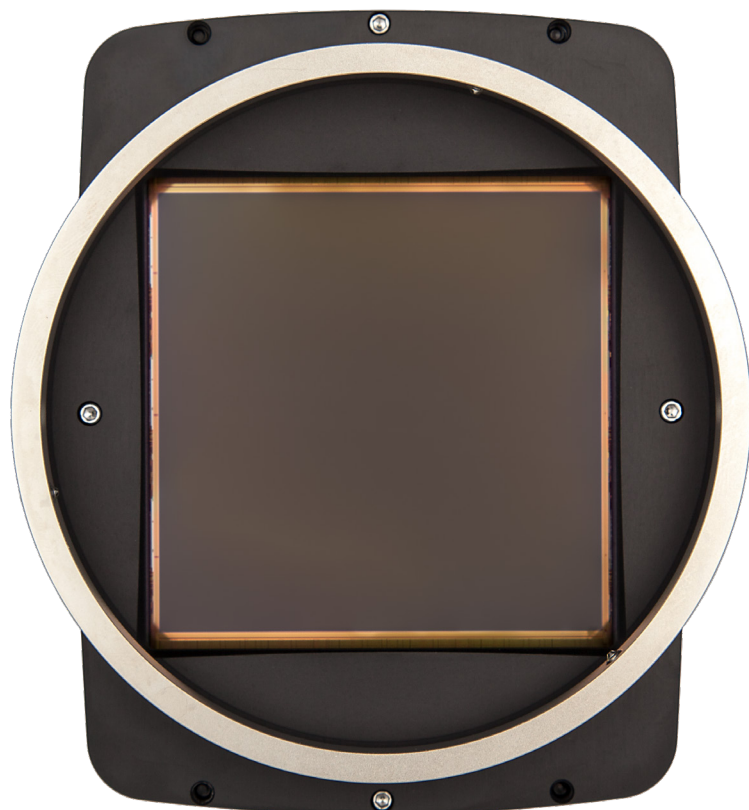
Native HDR capability

#### Scientific configurations

Astronomy - Backside illuminated, cooled camera

High energy physics, medical, biological, TEM

Fiber optic bonding to sensor with scintillator available



scale 1:1

ximea

Get in touch with our teams at [sales@ximea.com](mailto:sales@ximea.com). We will be glad to assist and consult you regarding our products.

Worldwide

**XIMEA GmbH**

Tel: +49 251 202 408-0

[info@ximea.com](mailto:info@ximea.com)

Slovakia and Czech Republic

**XIMEA s.r.o**

Tel: +421 (2) 205 104 26

[info@ximea.com](mailto:info@ximea.com)

America

**XIMEA Corp.**

Tel: +1 (303) 389 9838

[info@ximea.com](mailto:info@ximea.com)