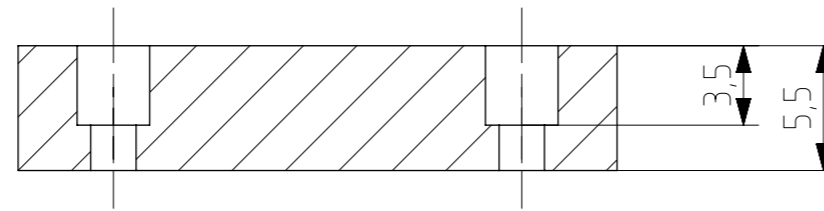
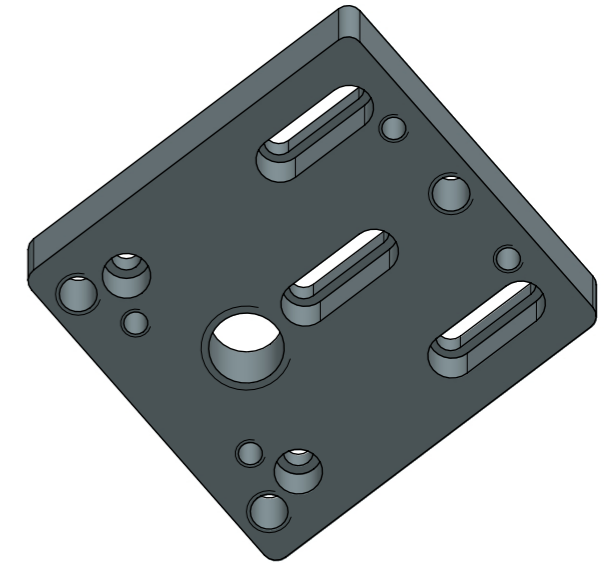
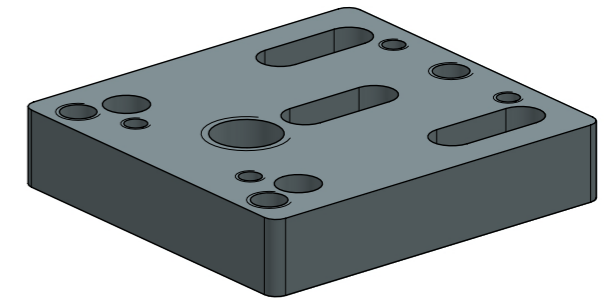
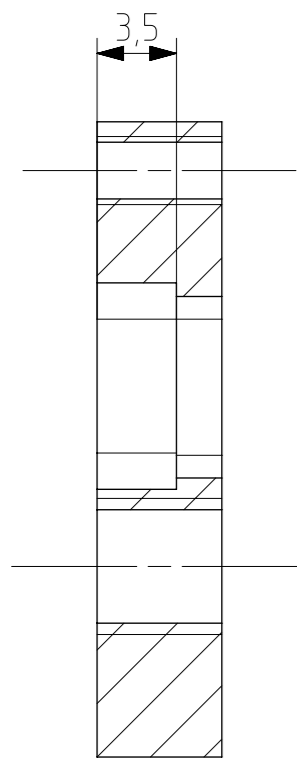


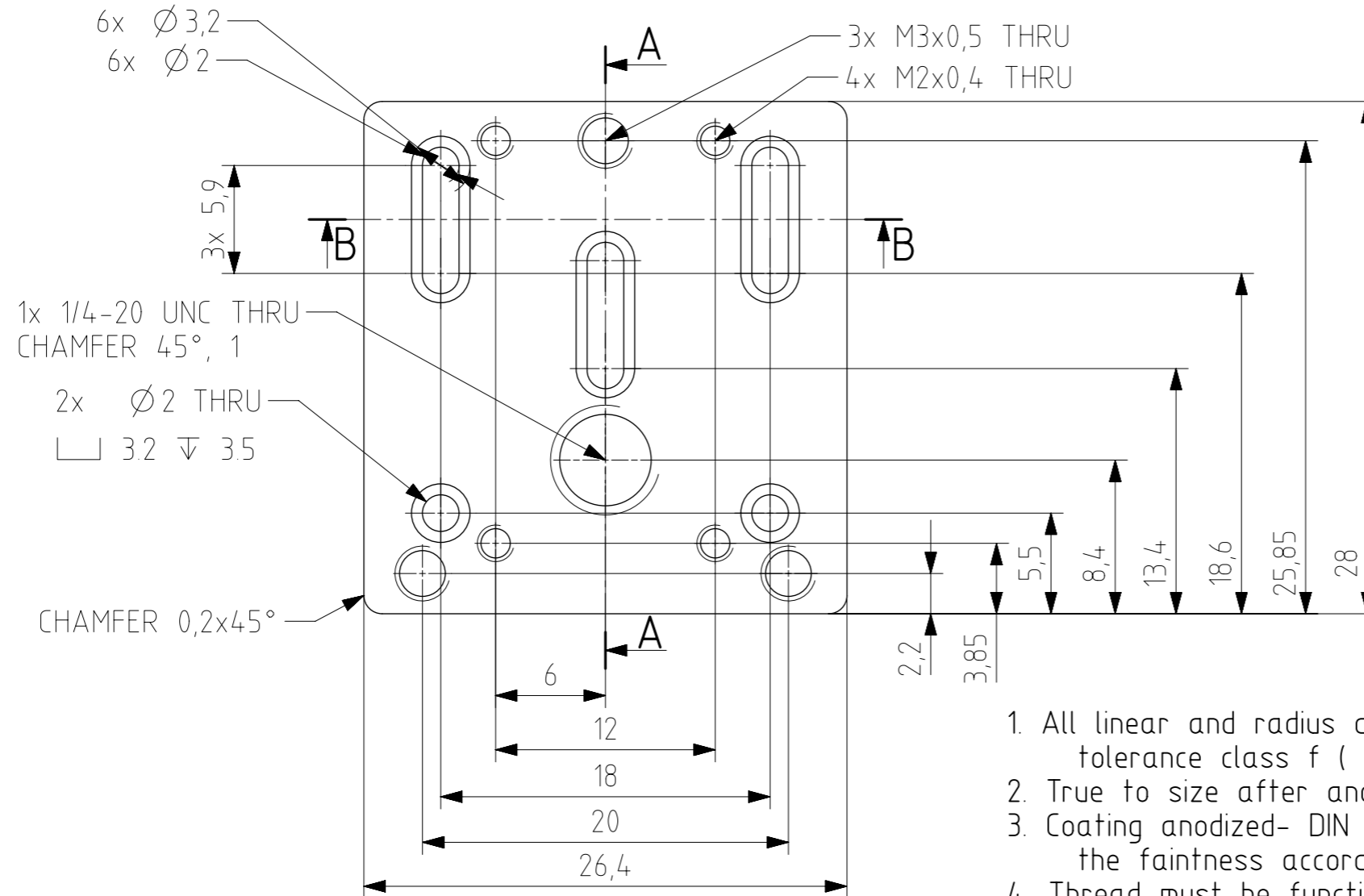
This drawings is the property of XIMEA GmbH. No use thereof shall be made other than as a reference for proposals as submitted to XIMEA GmbH for jobs to be executed in conformity with such proposals unless the consent of said XIMEA GmbH has previously been obtained. No part of this drawing shall be copied or duplicated or its contents disclosed. The information contained on this drawing is confidential and proprietary.



SECTION B-B



SECTION A-A



1. All linear and radius dimension tolerances according DIN ISO 2768-T1 tolerance class f ( fine ) unless noted otherwise
2. True to size after anodization
3. Coating anodized- DIN 17611-E6, color - EV6( black ) the faintness according to reference samples
4. Thread must be functional after coating( thread may be coated)
5. All threads chamfered 0,25x45°
6. All edges chamfered 0,1x45° unless noted otherwise

	Date:	Name:	PN:	Customer PN:	Surface Quality:
Designed	2014.12.10	SPANO	MECH-MQ-BRACKET-T-A	NA	
Drawn	2016.03.05	SPANO		Material:	Surface Finish:
Approved	2016.03.05	SPANO	Project Class	ALU 6061	OPTICAL BLACK
QC	2016.03.05	SPANO	MQ	First angle projection	Weight:
MFGP	2016.03.05	SPANO	Top Level Assembly		10 g
Department:	R&D	Default tolerances:	Change	Date	Name
		DIN ISO 2768-T1			
			Edges ISO 13715	Units:	Scale: 3:1
			Surface ISO 1302	mm	Format
				EU	A3
			Doc Type:	Part Doc:	Version Revision
					1.0
					Page:
					1 of 1