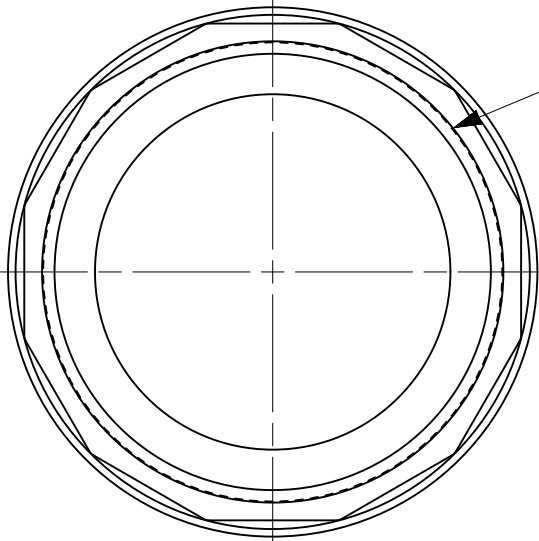



thread fit inside of camera



M12x0,5 ∇ 4,5

	Date:	Name:	PN:	Customer PN:	Surface Quality:
Designed	-	KLIMKOVIC	MECH-MU-ADAPT-M	NA	Ra
Drawn	20180413	SPANO		Material:	Surface Finish:
Approved	20180413	SPANO	Project Class MU Top Level Assembly	ALU 6061	Black Anodized
QC	20180413	SPANO		First angle projection	Weight:
MFGP	20180413	SPANO			
Department:	R&D	Default tolerances:		Units:	Scale: 5:1
		ISO2768-1		mm	Format
			Change	Date	Name
			Document Nr:	Doc. Type:	Part Doc:
				EU	Version Revision
					Page:
					1 of 1

1 2 3 4 5 6

A

A

B

B

C

C

D

D

1 2 3 4 5 A4