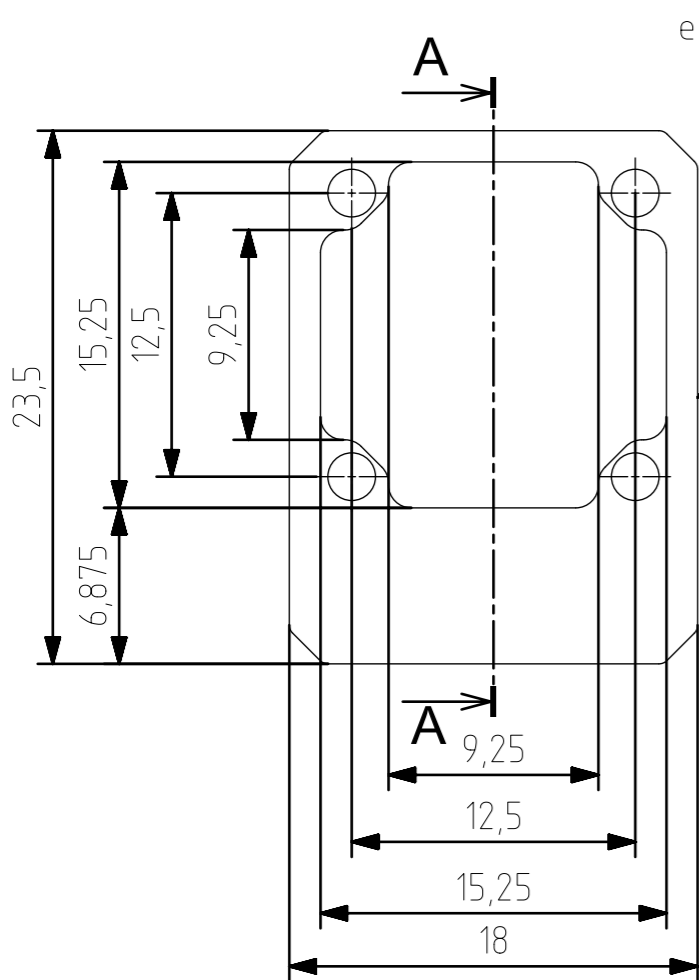


1/4-20 UNC Thru  
chamfered 0,7x45°



edges chamfered 0,5x45°

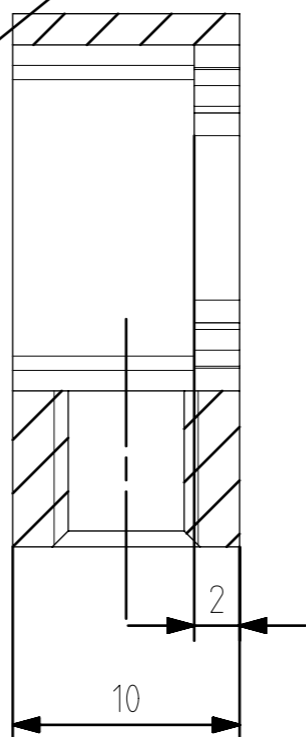
edge chamfered 0,3x45°

4x corner chamfered 1,5x45°

4x corner chamfered 1,5x45°

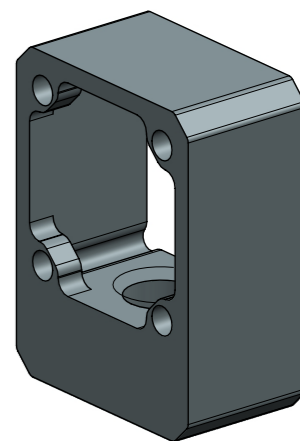
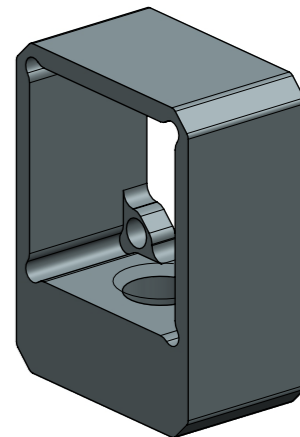
4x Ø 2,1

4x Ø 1,6



SECTION A-A

1. All linear and radius dimension tolerances according ISO 2768-1 tolerance class f ( fine ) unless noted otherwise
2. True to size after anodization
3. Before anodizing sandblasting needed
4. Coating anodized- DIN 17611-E6, color - EV6( black ) the faintness according to reference samples
5. Thread must be functional after coating ( thread may be coated)
6. All edges chamfered 0,1x45° unless noted otherwise



REVISION TABLE		
REV1	GS 20180518	ORIGINAL PART

This drawings is the property of XIMEA GmbH. No use thereof shall be made other than as a reference for proposals as submitted to XIMEA GmbH for jobs to be executed in conformity with such proposals unless the consent of said XIMEA GmbH has previously been obtained. No part of this drawing shall be copied or duplicated or its contents disclosed. The information contained on this drawing is confidential and proprietary.

Date:	Name:	PN:	Customer PN:	Surface Quality:	
-	SPANO	MECH-MU-BRACKET	NA	Ra 0.8	
Drawn	20180518	SPANO	Material:	Surface Finish:	
Approved	20180518	SPANO	ENAW6061	OPTICAL BLACK	
QC	20180518	SPANO	Project Class	Weight:	
MFGP	20180518	SPANO	MECH-MU-BRACKET-REV1	5g	
Department:	Default tolerances:	Change	Date	Name	
R&D	ISO2768-f				
			Units:	Scale: 3:1	Format
Document Nr:			mm		A3
			Doc Type:	PART REVISION	DOCUMENT REVISION
			EU	REV1	A
					Page:
					1 of 1