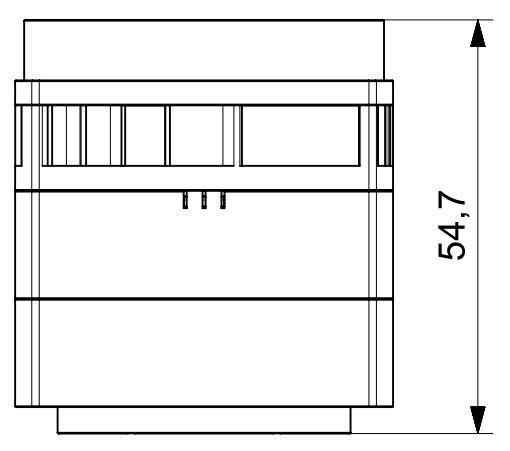
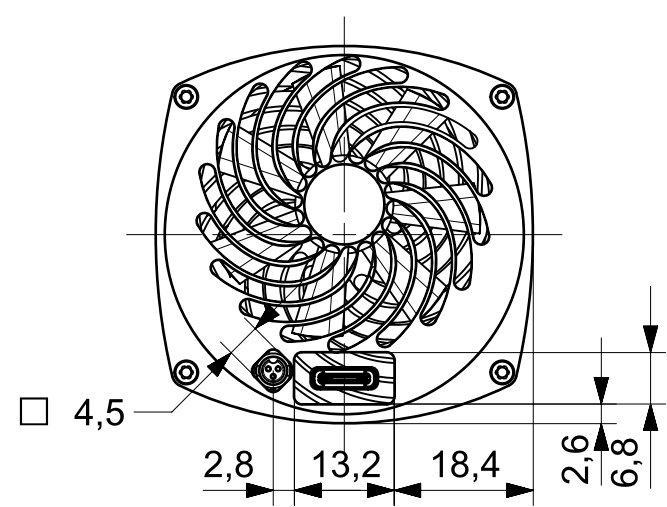
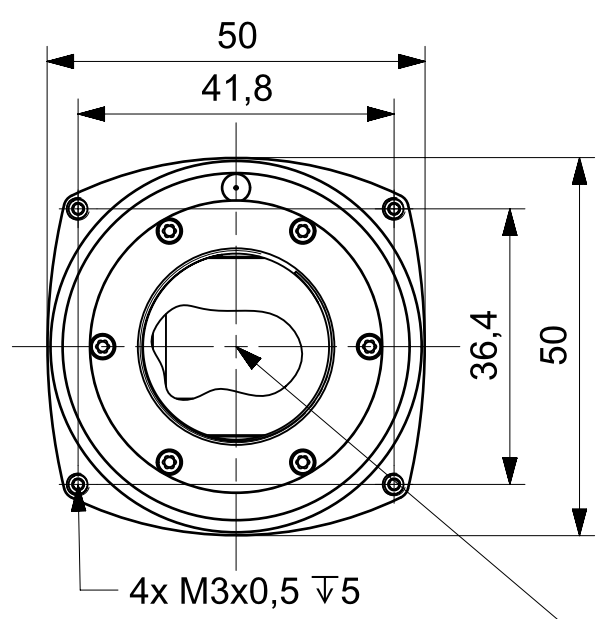


M42X1  $\nabla$ 4  
(UNIVERSAL THREAD MOUNT)

**MJ042(KAI-0407)-M42**

1) Distance from the front face of the lens mount to the active area of sensor is 19,95 mm  $\pm$ 0,2mm  
2) Distance from the front face of the front part to the active area of sensor is 14,45mm  $\pm$ 0,2mm



1"x32TPI UN  $\nabla$ 6

**MJ042(KAI-04070)-C**

1) Distance from the front face of the lens mount to the active area of sensor is 17,95 mm  $\pm$ 0,2mm  
2) Distance from the front face of the front part to the active area of sensor is 14,45mm  $\pm$ 0,2mm

This drawings is the property of XIMEA GmbH. No use thereof shall be made other than as a reference for proposals as submitted to XIMEA GmbH for jobs to be executed in conformity with such proposals unless the consent of said XIMEA GmbH has previously been obtained. No part of this drawing shall be copied or duplicated or its contents disclosed. The information contained on this drawing is confidential and proprietary.

	Date:	Name:	PN:	Customer PN:	Surface Quality:
Designed	20160901	KLIMKOVIC	<b>MJ042(KAI-04070)-M42 or MJ042(KAI-04070)-C</b>	NA	Ra
Drawn	20162012	SPANO		Material:	Surface Finish:
Approved	20162012	SPANO	Project Class	ALU 6061	Black Anodized
QC	20162012	SPANO	MJ Top Level Assembly	First angle projection	Weight:
MFGP	20162012	SPANO			
Department:	HADROVNIK	Default tolerances:		Units:	Scale: 11
		ISO2768-1		mm	Format
			Change	Date	Name
			Document Nr:	Doc Type:	Part Doc:
				EU	Version Revision
					Page:
					1.0
					1 of 1

