

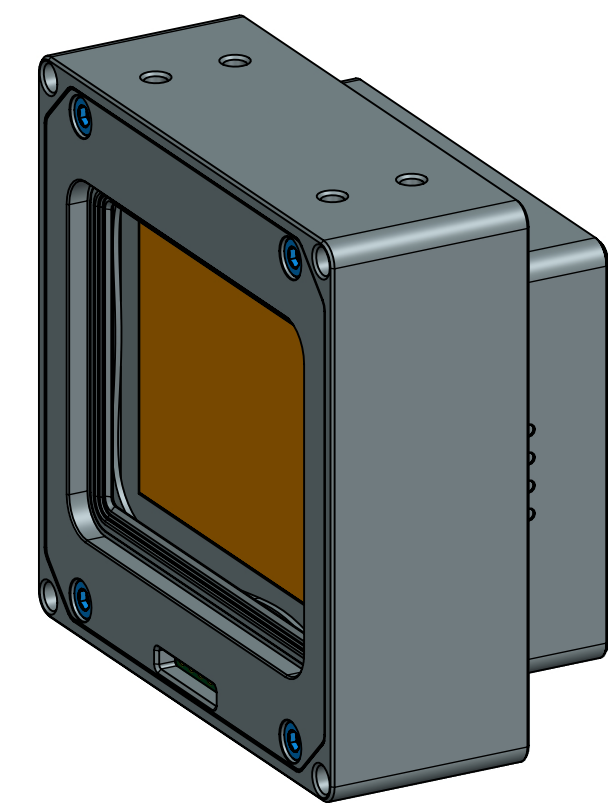
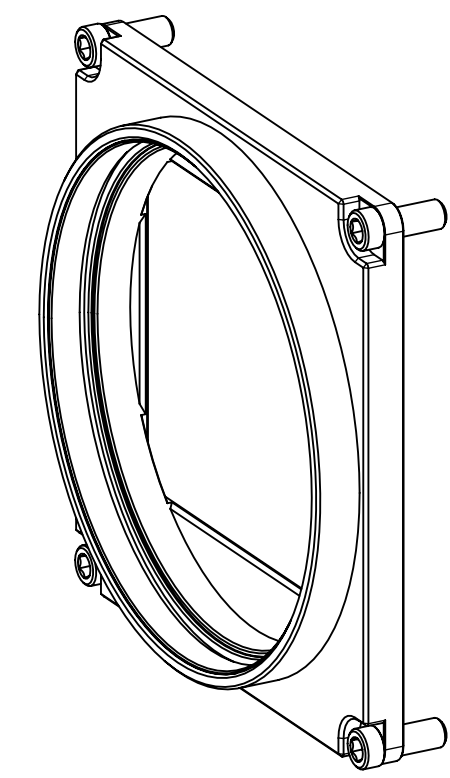
Lens Accessory

MX1510 Camera models  
(based on Sony IMX411)

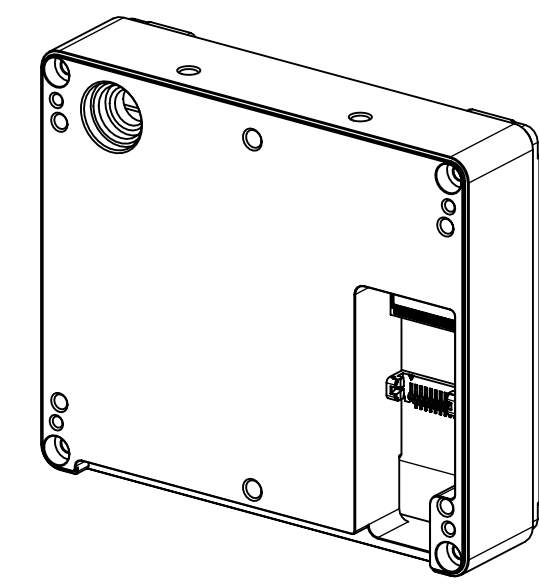
Backside connection options

Heatsink Options

M72x0,75 mount



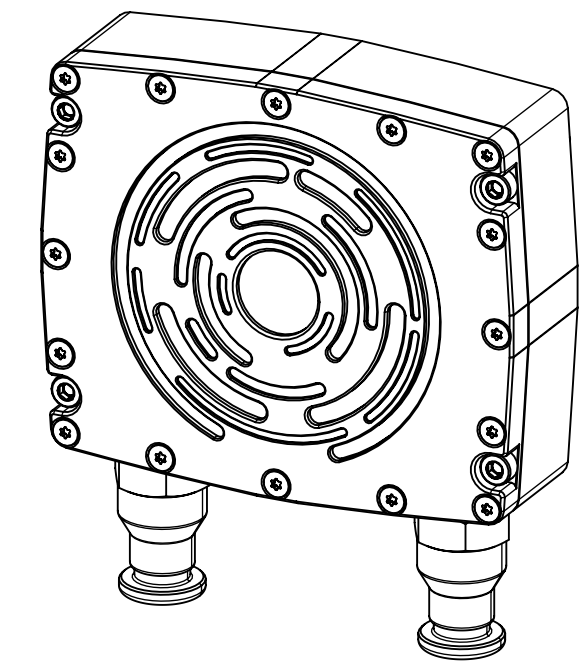
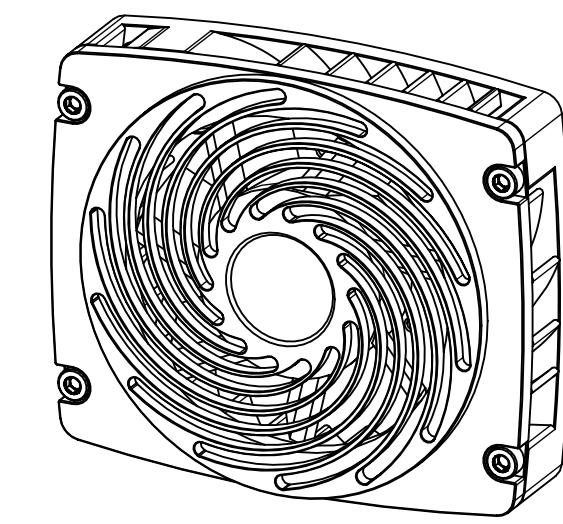
PCIe Gen3 x4 lanes cable connector - Firefly version  
(Comes as the default version of the camera)



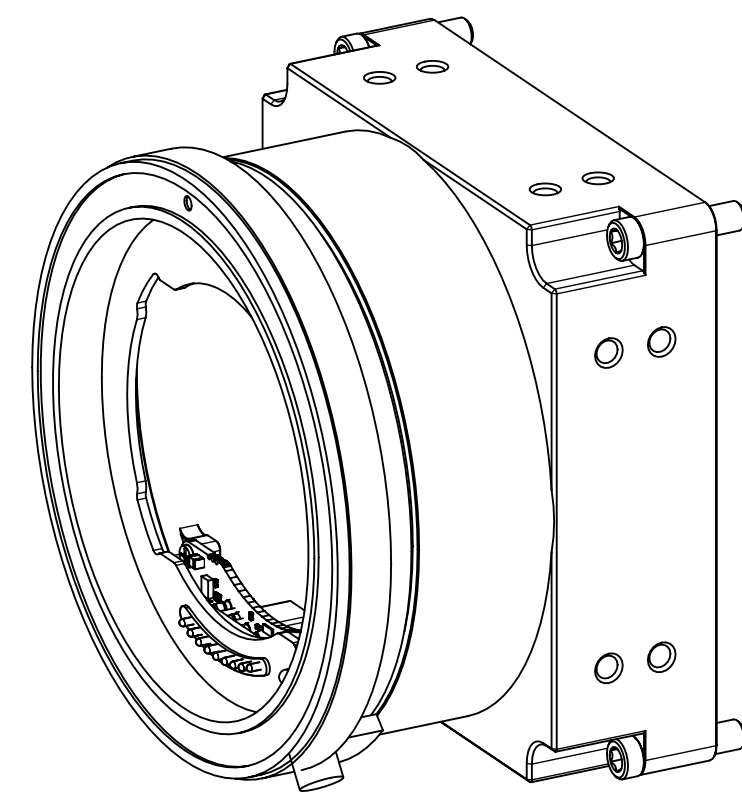
Air cooled heatsink

or

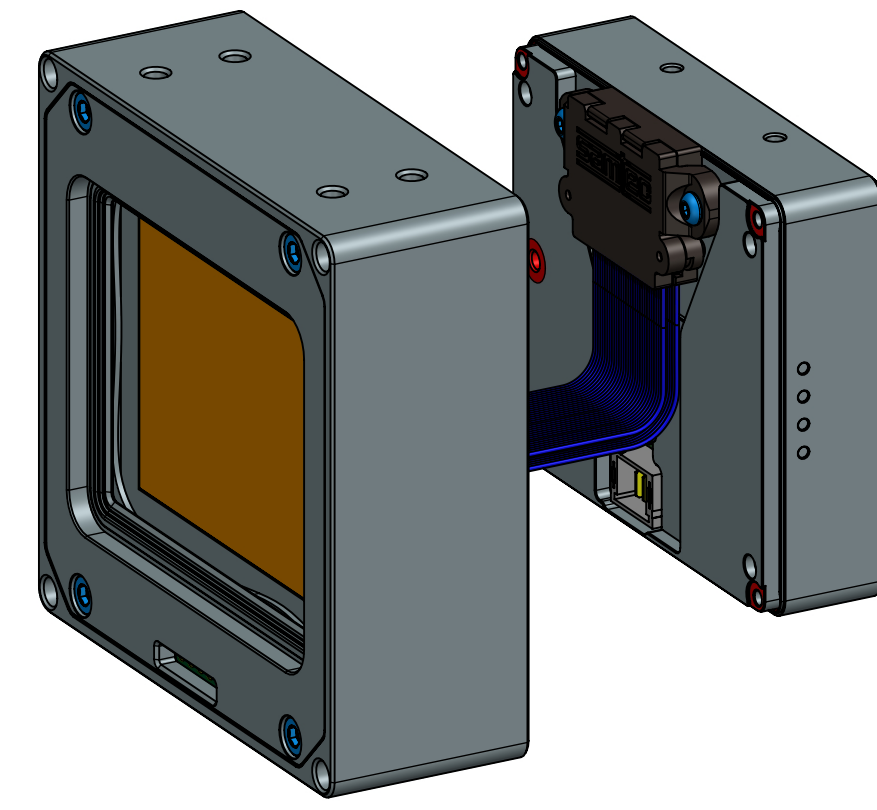
Water cooled heatsink



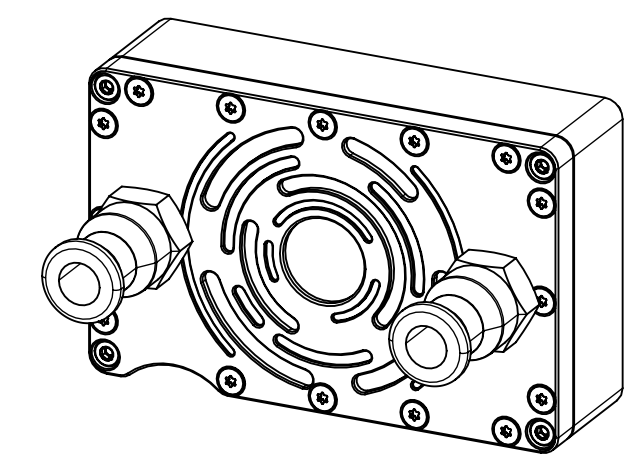
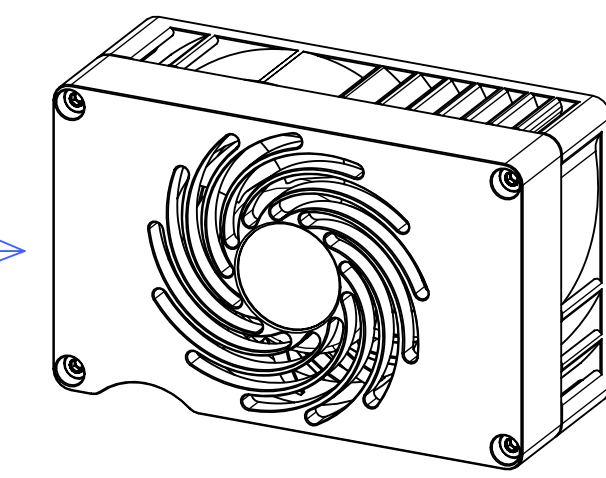
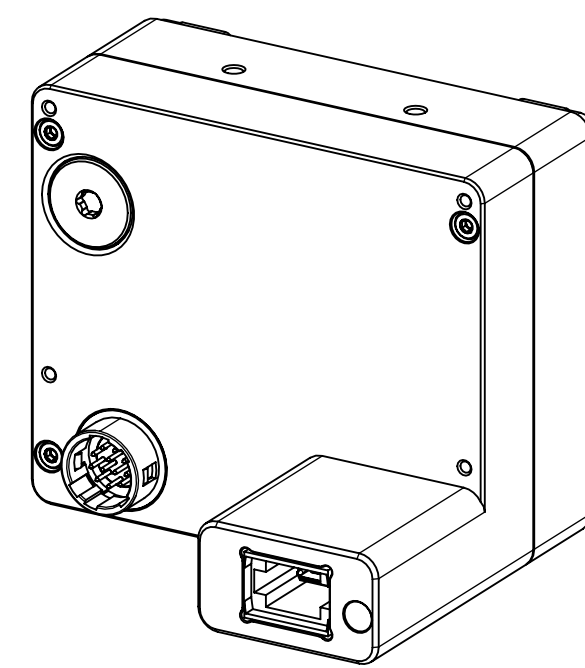
Hasselblad H system mount



Option with detached image sensor module  
(Cable length up to 2m)



MTP (X4G3) back end  
(optional accessory - additional to the Firefly)



\* Designed for 6mm (water rated) tubes

This drawing is the property of XIMEA s.r.o. No use thereof shall be made other than as a reference for proposals as submitted to XIMEA s.r.o. for jobs to be executed in conformity with such proposals unless the consent of said XIMEA s.r.o. has previously been obtained. No part of this drawing shall be copied or duplicated or its contents disclosed. The information contained in this drawing is confidential and proprietary.

	Date:	Name:	PN:	Customer PN:	Surface Quality:
Designed			MX1510xR-SY-X4G3-FF	NA	
Drawn	20220425	GS		Material:	Surface Finish:
Approved					optical black
QC				First angle projection	Weight:
MFGP					
Department:	R&D	Default Tolerances:		Units:	Scale: 1:1
				mm	Format
					A2
				Doc Type:	PART REVISION
				EU	DOCUMENT REVISION
					Page:
					1 of 1

