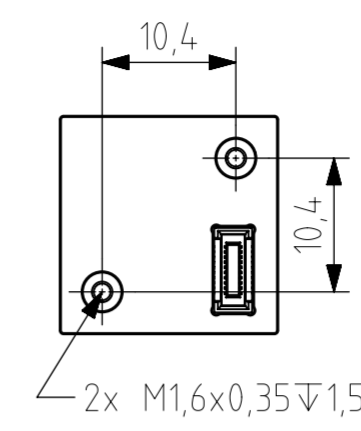
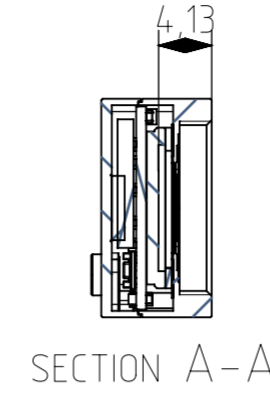
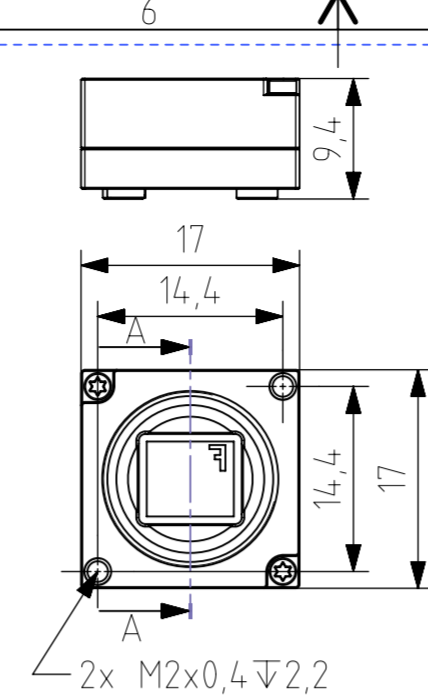
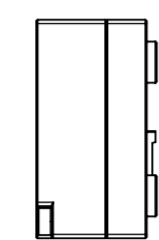
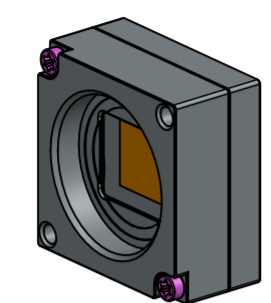
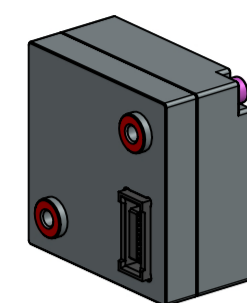
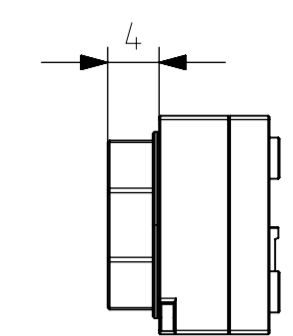
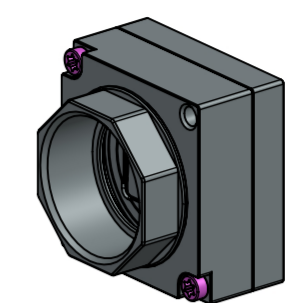


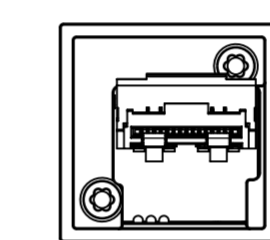
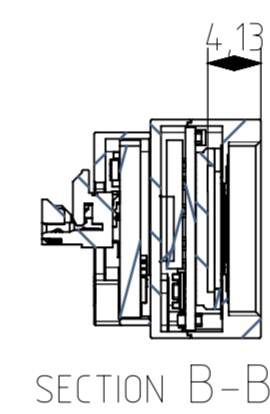
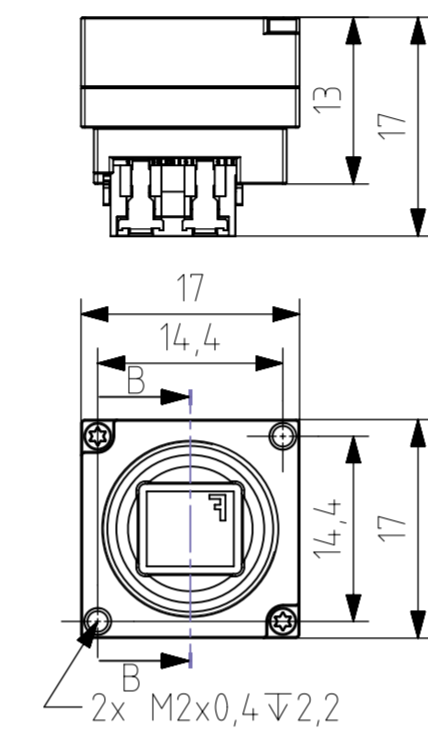
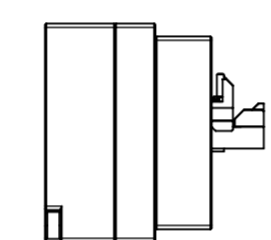
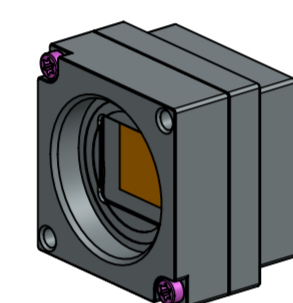
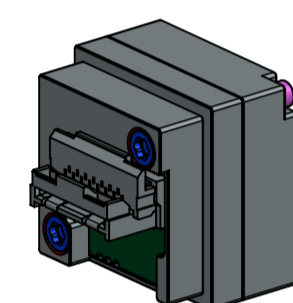
MU051xG-SY



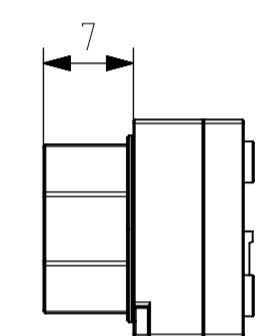
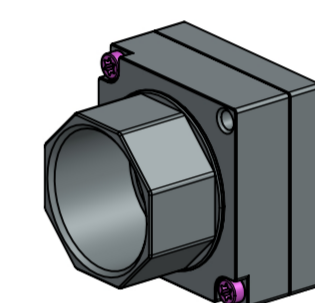
M12 medium lens adapter



MU051xG-SY with axial and perpendicular flex line adapter



M12 large lens adapter



MU051xG-SY with Type C connector adapter

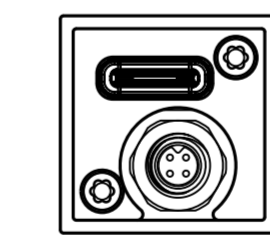
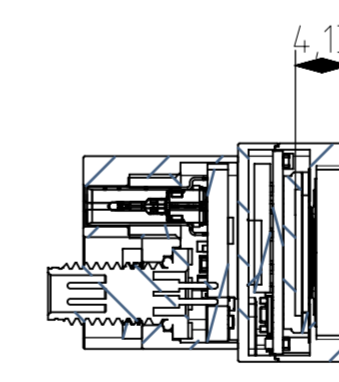
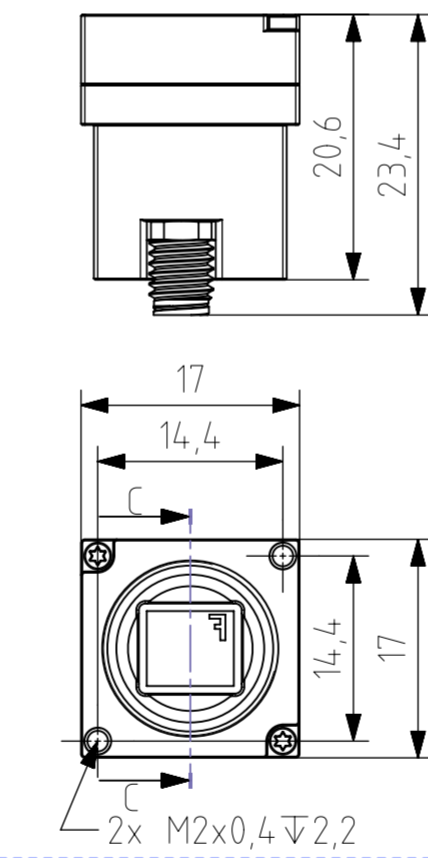
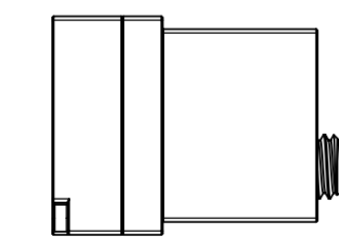
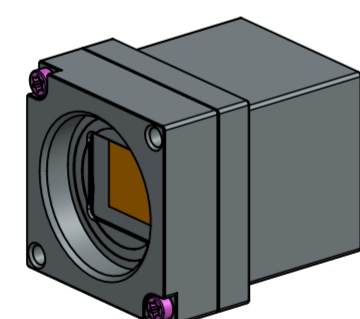
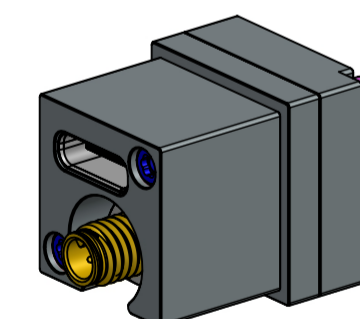
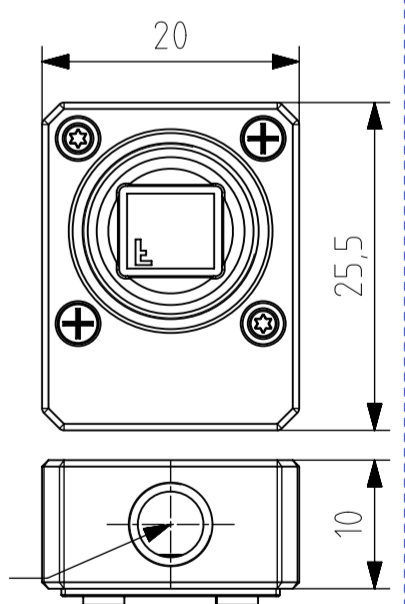
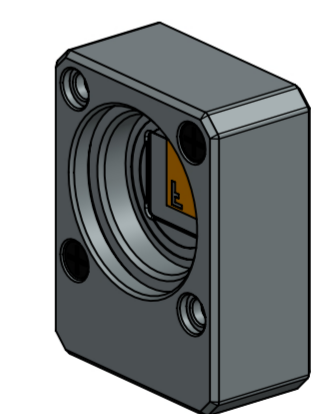
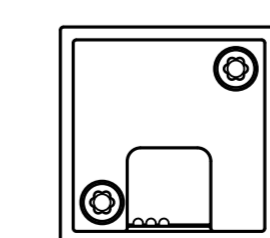
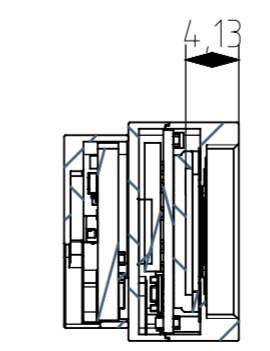
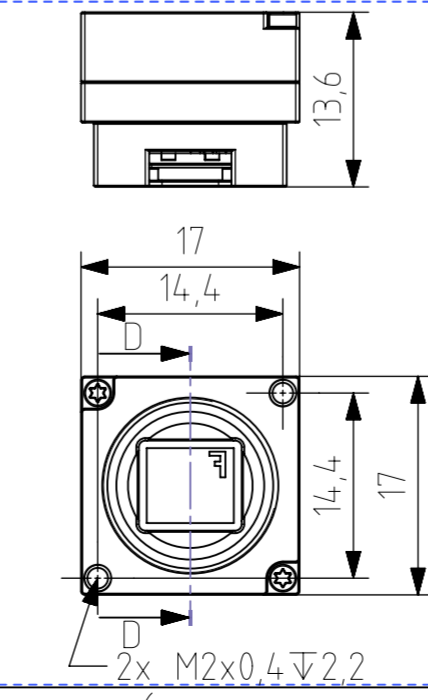
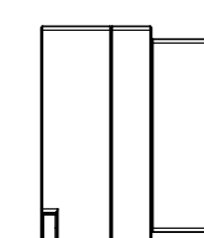
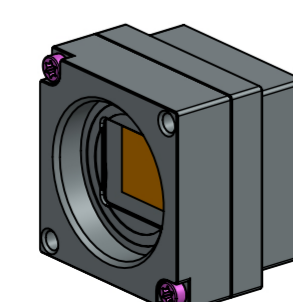
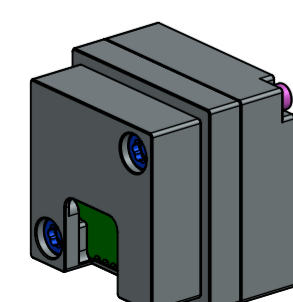


Photo thread adapter



MU051xG-SY with Type UC connector adapter



This drawing is the property of XIMEA s.r.o. No use thereof shall be made other than as a reference for proposals as submitted to XIMEA s.r.o. for jobs to be executed in conformity with such proposals unless the consent of said XIMEA s.r.o. has previously been obtained. No part of this drawing shall be copied or duplicated or its contents disclosed. The information contained in this drawing is confidential and proprietary.

Date:	Name:	PN:	Customer PN:	Surface Quality:	
-	R&D	MU051xG-SY	NA	Ra	
Designed	20230525	GS	Material:	Surface Finish:	
Drawn			QC	optical black	
Approved			PN MFG	Weight:	
QC					
MFGP					
Department:	R&D	Default Tolerances:	Units:	Scale:	
			mm		
			Change	Date	Name
			Doc Type:	PART REVISION	DOCUMENT REVISION
			EU		

ximea