

1 2 3 4 5 6 7 8

A

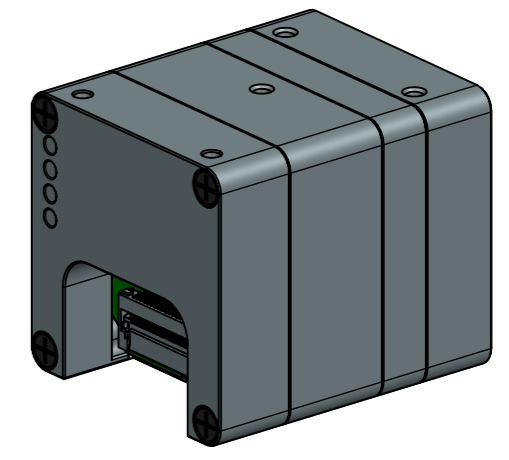
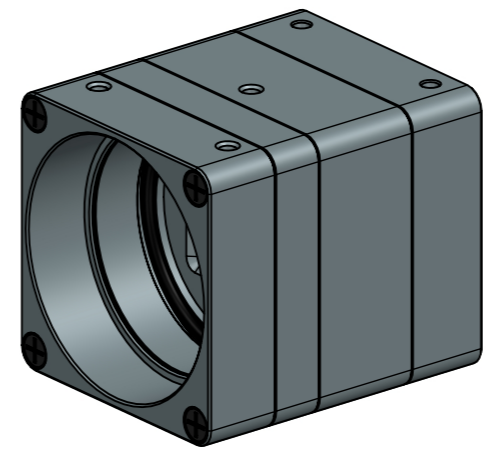
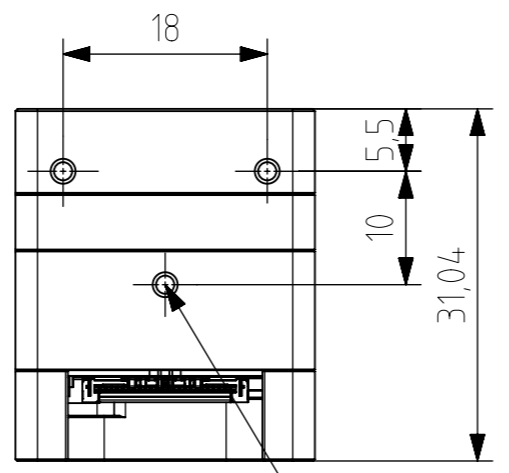
B

C

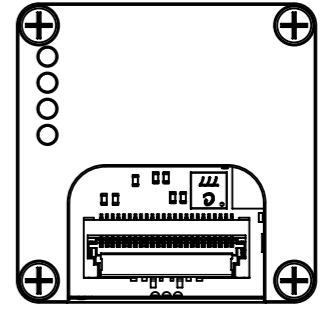
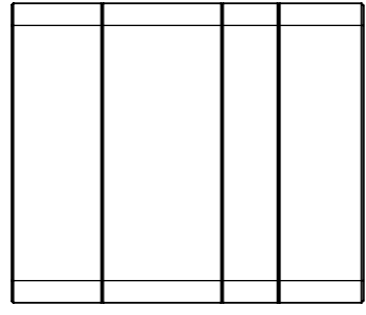
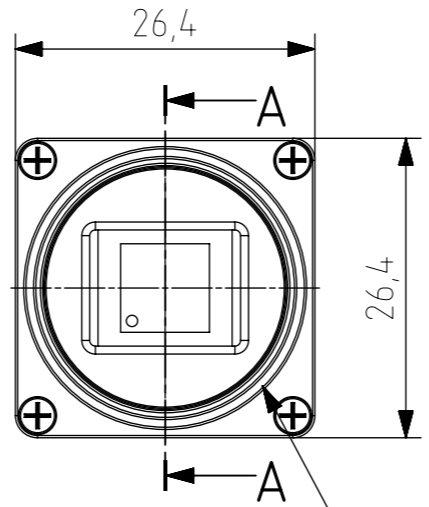
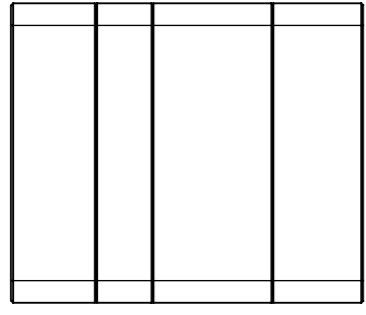
D

E

F

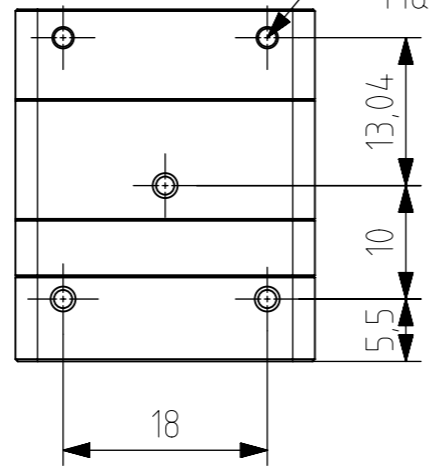
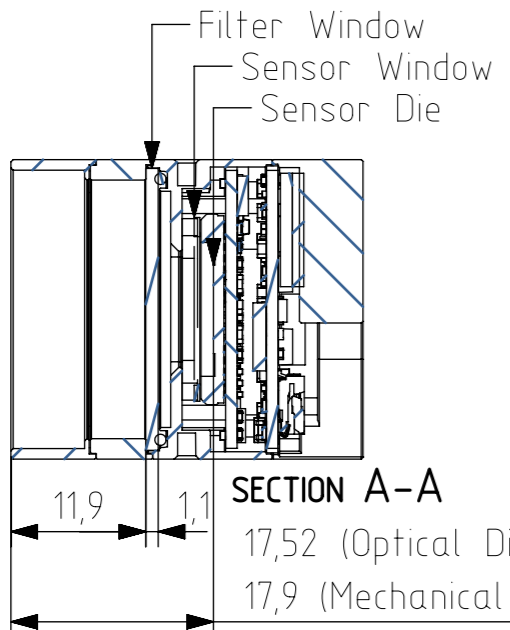


5x M2x0,4  $\nabla$ 2  
Max torque 0,3N



C-mount  
1"x32TPI  $\nabla$ 6,0

5x M2x0,4  $\nabla$ 2  
Max torque 0,3N



Designed	20231207	Name:	R&D	PN:	MX081UG-SY-X2G2-FL-HDR	Customer PN:	NA	Surface Quality:	
Drawn	20240325	QC	GS	PN MFG		Material:		Surface Finish:	
Approved		MFGP				First angle projection		Weight:	
Department:	R&D	Default tolerances:	DIN ISO 2768-T1	Change	Date	Name	Units:	Scale: 1:1	Format
							mm		A3
							Doc Type:	EU	PART REVISION

This drawings is the property of XIMEA s.r.o. No use thereof shall be made other than as a reference for proposals as submitted to XIMEA s.r.o. for jobs to be executed in conformity with such proposals unless the consent of said XIMEA s.r.o. has previously been obtained. No part of this drawing shall be copied or duplicated or its contents disclosed. The information contained on this drawing is confidential and proprietary.

1 2 3 4 5 6 7 8